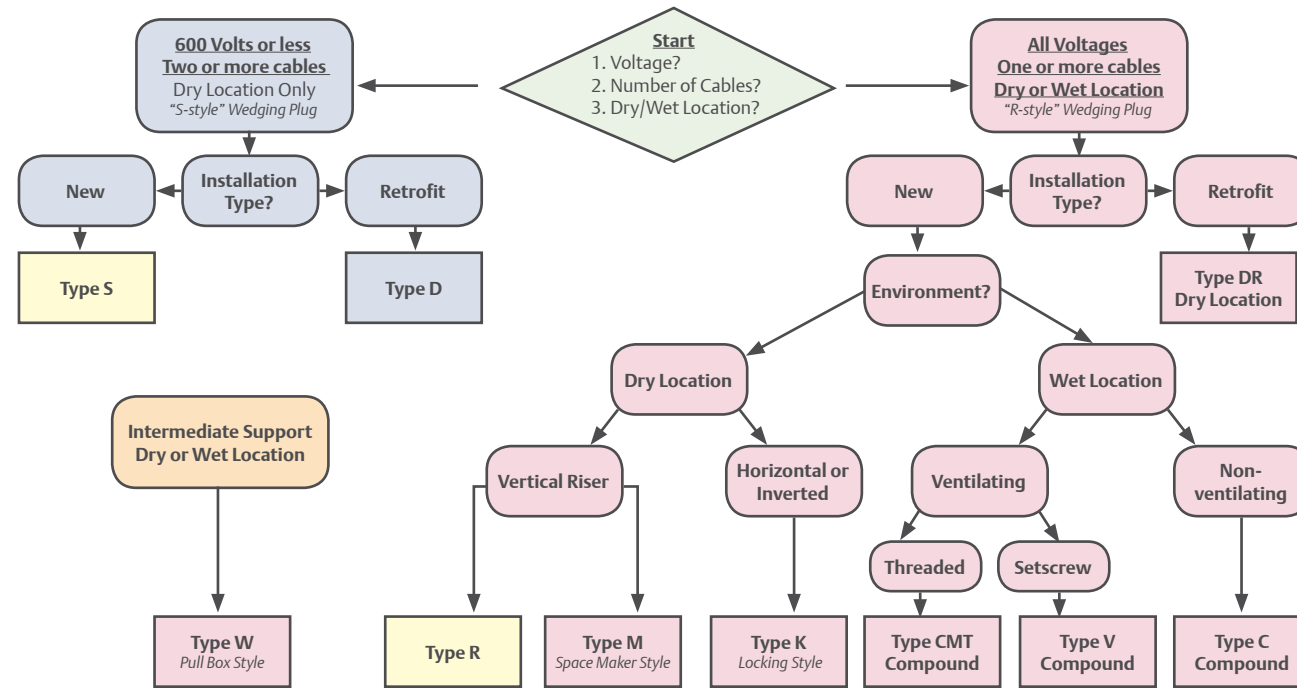


Questions You Need to Ask the Customer:

1. Size of RMC, IMC, EMT Connector or PVC Terminal Adapter?
2. Voltage of conductors?
3. Are all conductors insulated? (bare ground conductors may slip)
4. Quantity and diameter (OD) of Conductors in decimals? – Fractions, AWG or kcmil does not help us! We need actual decimal OD's.
5. Dry or Wet Location? – “Dry” could be indoors or inside a weatherproof enclosure outdoors. – “Wet” would be exposed to the elements where sealing is needed.
6. Vertical Height of Riser? Copper or aluminum wire? and AWG/kcmil of largest conductor? – This will determine if intermediate supports are needed.
7. Are the Conductors Terminated? – If so, a Type D or DR Retrofit Cable Support may be needed.

Note: SPLG and RPLG Plugs will not be supplied undrilled.



How to Use This Chart for S and D Cable Supports

- (1) Select your conduit size and measure your cable diameter(s) which must fit within the min/max range corresponding to the quantity of cables in the white area of this chart. (Note: S and D Cable Supports must be used with two or more cables, 600 volts maximum)
- (2) Cable diameters that fall within the gray area of this chart cannot be accommodated. Therefore a 3" Cable Support has a cable range of 0.261" up to 1.130". Cables smaller or larger cannot be considered.
- (3) Example: A 3" Cable Support will be used for 3 cables at 1.051" and 1 cable at 0.384". Refer to the 3" Conduit Size column. We can fit 4 cables between 1.011" to 1.070" therefore 3 at 1.051" will fit. The fourth cable fits between 0.361" to 0.410" within the white area in the 3" Conduit column. This drilling will work.
- (4) Using the example above but the fourth cable is smaller at 0.216", this drilling will not work. The 0.216" cable falls into the 0.211" to 0.260" range which is within the gray shaded area of the 3" conduit column. In this case, we recommend using our Cable Supports with R-type wedging plugs. See the R table.



For combinations of cables that fall outside these parameters, please contact your local representative.

Types S and D Min/Max Cable OD (Inches)	Conduit Size							
	1-1/2"	2"	2-1/2"	3"	3-1/2"	4"	5"	6"
.180 - .210	10	15						
.211 - .260	8	13	16					
.261 - .310	8	11	14	18				
.311 - .360	6	9	12	16	19			
.361 - .410	4	8	11	15	17			
.411 - .460	4	6	10	13	15	17		
.461 - .510	4	5	8	11	14	16		
.511 - .560	4	5	7	10	12	14		
.561 - .610	2	5	6	9	11	13		
.611 - .660	2	4	5	8	10	12		
.661 - .710		4	4	8	10	11		
.711 - .760		4	4	7	9	10		
.761 - .810		2	4	7	8	10		
.811 - .860			4	6	8	9	12	
.861 - .910			4	6	7	8	11	
.911 - .960			4	5	7	8	10	
.961 - 1.010				5	6	7	10	
1.011 - 1.070				4	6	7	9	
1.071 - 1.130				4	4	6	9	11
1.131 - 1.190					4	6	8	11
1.191 - 1.250					4	5	7	10
1.251 - 1.310					4	4	7	10
1.311 - 1.370						4	7	9
1.371 - 1.430						4	6	8
1.431 - 1.490						4	6	8
1.491 - 1.550						4	5	8
1.551 - 1.610						2	4	7

Spacing for Conductor Supports per the National Electrical Code Table 300.19(A) (Canadian Electrical Code Table 21)

A support is required at or near the top of a vertical raceway, with intermediate supports at intervals not exceeding these values.

Size of Wire	Support of Conductors in Vertical Raceways	Aluminum or Copper - Clad Aluminum Meters (Feet)	Copper Meters (Feet)
18 AWG thru 8 AWG	Not greater than	30 (100)	30 (100)
6 AWG thru 1/0 AWG	Not greater than	60 (200)	30 (100)
2/0 AWG thru 4/0 AWG	Not greater than	55 (180)	25 (80)
over 4/0 AWG - 350 kcmil	Not greater than	41 (135)	18 (60)
over 350 kcmil - 500 kcmil	Not greater than	36 (120)	15 (50)
over 500 kcmil - 750 kcmil	Not greater than	28 (95)	12 (40)
over 750 kcmil	Not greater than	26 (85)	11 (35)

Application	Recommended O-Z/Gedney™ Cable Supports
TWO or more wires - Indoors - at voltages to 600 Volt	Type S
Retrofit - TWO or more wires - Indoors - at voltages to 600 Volt	Type D
ONE or more wires - Indoors - at all voltages	Type R
Retrofit - ONE or more wires - Indoors - at all voltages	Type DR
Ventilating - ONE or more wires - Outdoors - at all voltages	Type CMT
Ventilating - Bakelite - ONE or more wires - Outdoors - at all voltages	Type V
Non-ventilating - ONE or more wires - Outdoors - at all voltages	Type C
Locking - Horizontal/Vertical - ONE or more wires - Indoors - at all voltages	Type K
Space Maker - ONE or more wires - Indoors - at all voltages	Type M
Pull Box - ONE or more wires - Outdoors at all voltages	Type W
Conduit Ventilators	Type KVF/KVM
Grounding Lugs (Optional for all types excluding Types D, DR and V)	Type G
Wire Armored Cable - In conduit or supported by structure	Type F/FS/FT/SF1773

Drill Chart for Type R, DR, CMT, V, C, K, M and W Cable Supports

For combinations of cables that fall outside these parameters, please contact your local representative.

Type R, DR, CMT, V, C, K, M, and W Cable Supports (Minimum wire diameter for all conduit sizes: 0.180")						
Maximum Diameter of Wire Permitted in Inches						
Conduit Size (Inches)	1 Wire	2 Wires	3 Wires	4 Wires	5 Wires	6 Wires
1-1/2"	1.40	0.64	0.59	0.51	0.39	0.37
2"	1.84	0.86	0.79	0.69	0.53	0.53
2-1/2"	2.25	1.06	0.98	0.85	0.66	0.64
3"	2.84	1.36	1.25	1.10	0.86	0.85
3-1/2"	3.31	1.60	1.47	1.30	1.02	0.96
4"	3.81	1.84	1.70	1.50	1.18	1.09
5"	4.81	2.34	2.15	1.90	1.52	1.40
6"	5.84	2.86	2.62	2.34	1.86	1.71

United States
(Headquarters)
Appleton Grp LLC
9377 W. Higgins Road
Rosemont, IL 60018
T +1 800 621 1506

Europe
Amiens, France
T +33 3 2254 1390

Canada
Elmira ON, Canada
T +1 888 765 2226

Asia Pacific
Singapore
T +65 6556 1100

Latin America
Ciudad de México
T +52 55 5809 5049

Australia Sales Office
Bayswater, Victoria
T +61 3 9721 0348

China Sales Office
Shanghai
T +86 21 3338 7000

Middle East Sales Office
Dubai, United Arab Emirates
T +971 4 811 8000

Chile Sales Office
Las Condes
T +56 2928 4819

India Sales Office
Chennai
T +91 44 3919 7300

Korea Sales Office
Seoul
T +82 2 3483 1555

