

Appleton™ Areamaster™/Baymaster™ LED Driver Replacement Instructions

FOR PROPER AND SAFE INSTALLATION OF THIS PRODUCT, PLEASE READ THE FOLLOWING INSTRUCTIONS.

Product Safety

Signal Words Defined

DANGER indicates a hazardous situation which, if not avoided, will result in death or serious injury. **WARNING** indicates a hazardous situation which, if not avoided, could result in death or serious injury. **CAUTION** indicates a hazardous situation which, if not avoided, could result in minor or moderate injury. **NOTICE** addresses practices not related to physical injury.

Safety Instructions

▲ WARNING:

- Do not open or remove luminaire with the circuit energized.

NOTICE:

- For wiring details, refer to the product instruction manual.

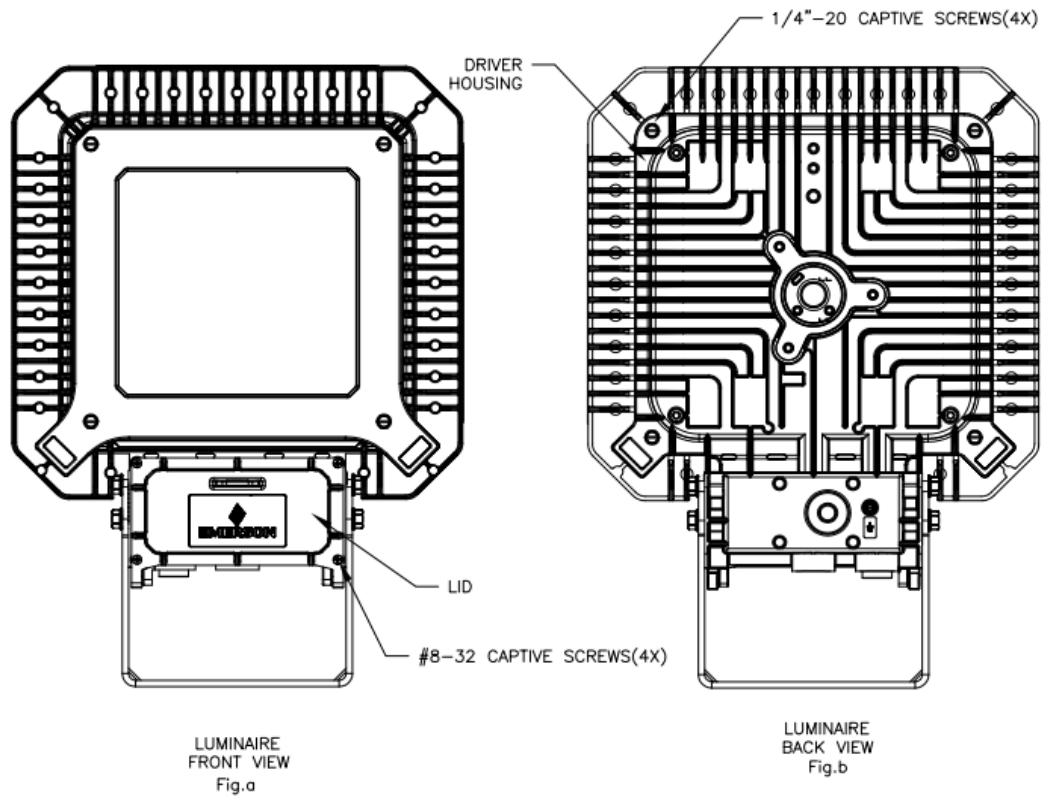
What's Included

- One (1) LED driver
- One (1) ground lug
- One (1) instruction sheet
- One (1) driver label

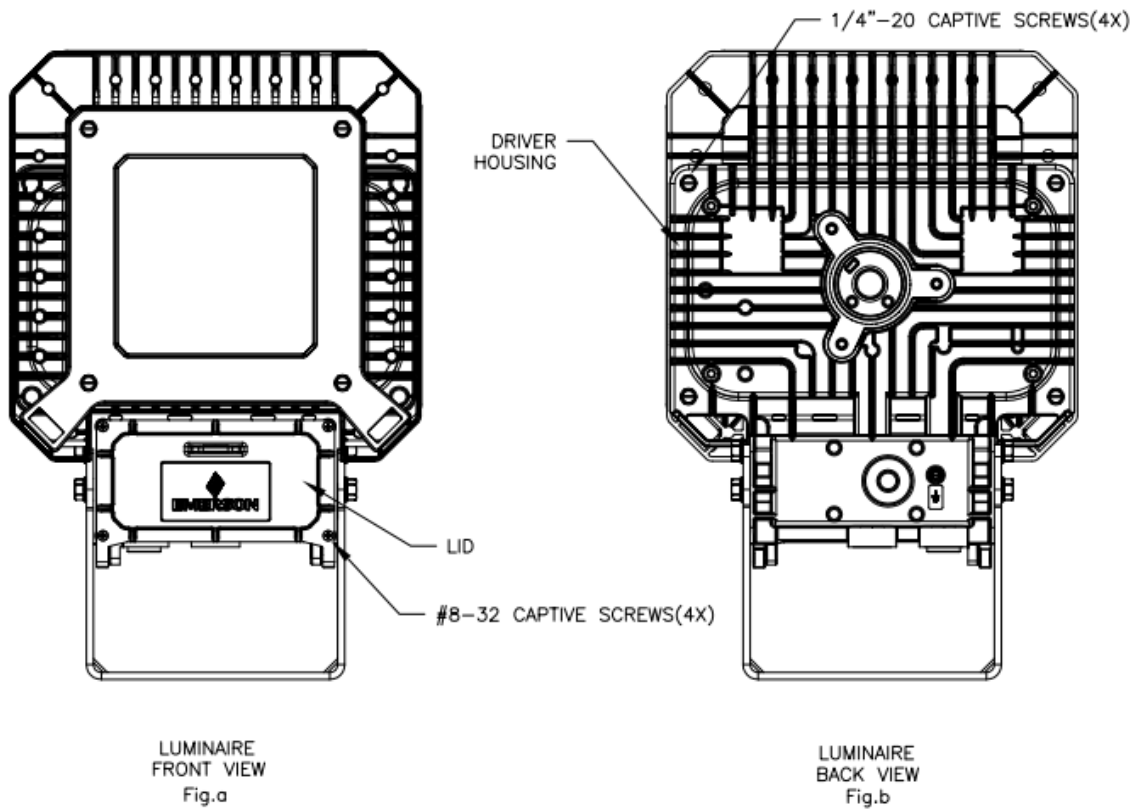
NOTE: Hardware is not included.

Removing the LED Driver

1. To access the fixtures interior, loosen the four (4) ¼"-20 captive screws located on the driver housing. See Fig. a & b.
2. If required, use a 5" screwdriver to pry the wiring compartment cover open. See Fig. c & d.
3. Loosen the terminal block screws holding the white (N) and black (L) wire leads and remove the wires.
4. Remove the #6-32 screw holding the ground lug
5. Loosen the screws inside the DC connector which holds the red and blue wire leads. Remove the wires.
6. Remove the four (4) #8-32 SEMS screws holding down the LED driver assembly.
7. If dimming is present, unscrew the dimming cable from the driver. See Fig. f.
8. Remove the old LED driver assembly.
9. Save the screws for reinstallation; new hardware is not supplied.



REMOVING THE LED DRIVER - APPLETON AREAMASTER/BAYMASTER HIGH LUMEN LED DRIVER



REMOVING THE LED DRIVER - APPLETON AREAMASTER/BAYMASTER GEN 2 LED DRIVER

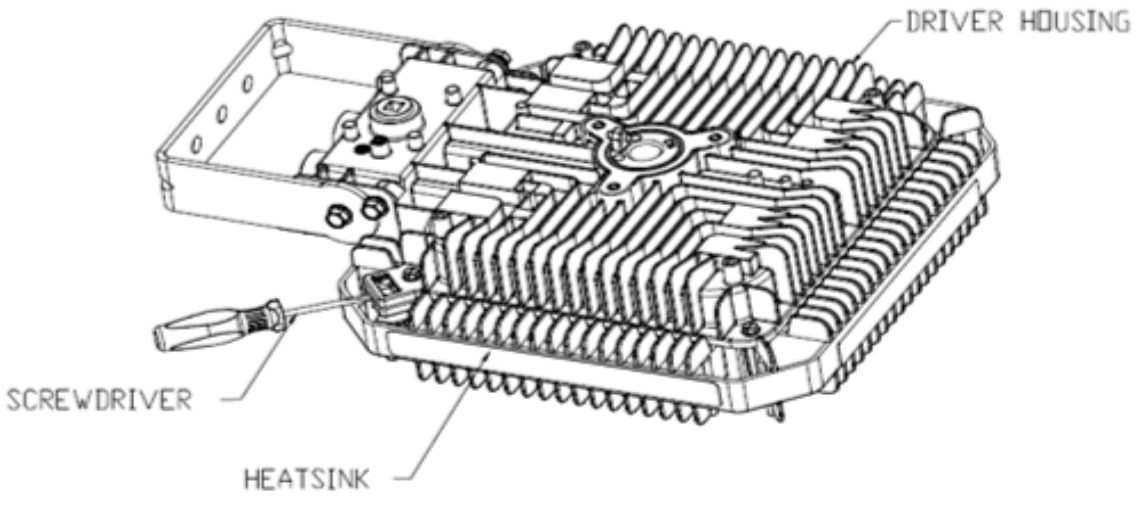


Fig. c

APPLETON AREAMASTER/BAYMASTER HIGH LUMEN

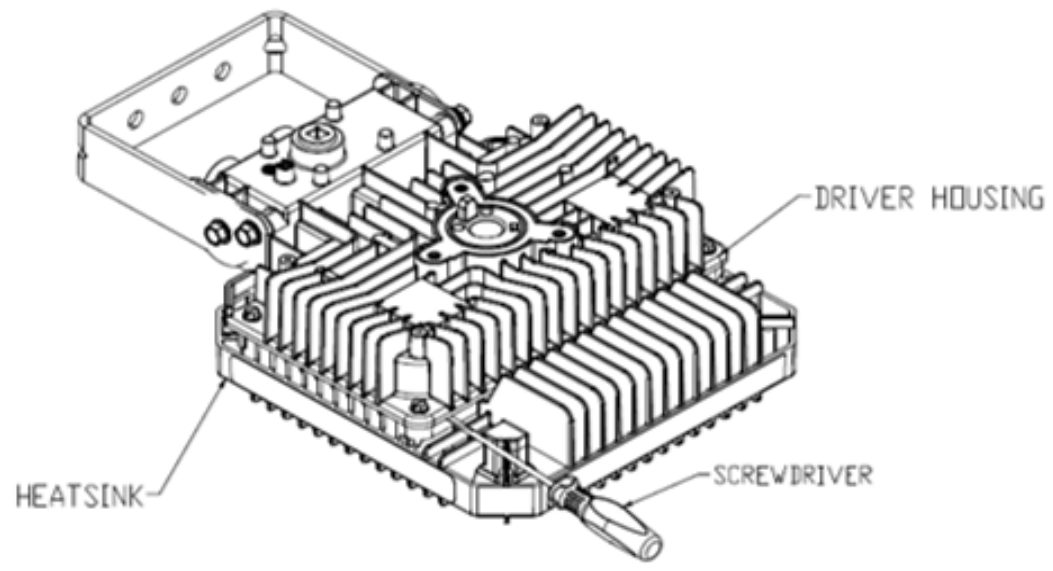


Fig. d

APPLETON AREAMASTER/BAYMASTER GEN 2

Assembly and Parts List

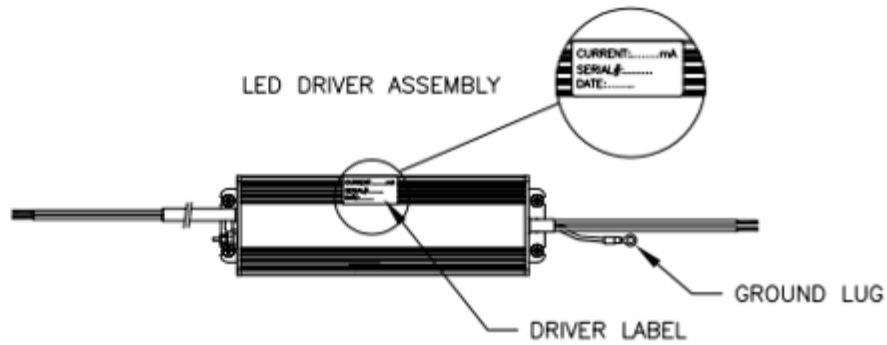


Fig. e

HIGH LUMEN/GEN 2 LED DRIVER ASSEMBLY AND LABEL

Installing the LED Driver

1. Cross check that current (mA) on driver label of the new LED driver assembly matches with current (mA) on the driver of the old LED driver assembly. See Fig. e.
2. Connect the dimming cable to the dimming port on the driver and hand tighten the nut. See Fig. f.
3. After the dimming cable is tightened on the driver, insert the new LED driver assembly into the driver housing. Orient the driver with the ground lug facing downward. See Fig. g.
4. Attach the LED driver to the fixture driver housing using four (4) SEMS screws.
5. Tighten the ground lug using a #6-32 screw.
6. Insert the white wire into the neutral line (marked "N") on the terminal block.
7. Insert the black wire into the line side (marked "L") on the terminal block.
8. Tighten the terminal block screws.
9. Insert the red wire into positive port (marked "red" color) on DC connector.
10. Insert the blue wire into the negative port (marked "blue" color) on DC connector.
11. Tighten the DC connector screws.
12. Close the fixture and tighten four (4) 1/4"-20 captive screws. Apply 35 in-lbs. (4 Nm) torque to the screws.



Fig. f

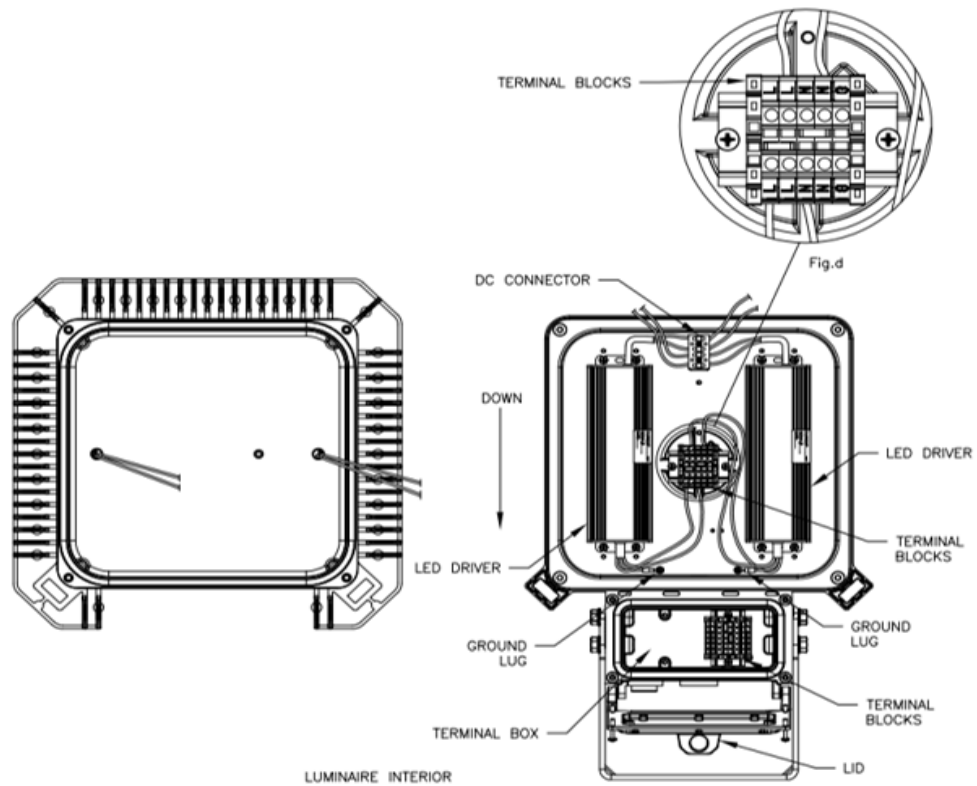


Fig. g

Except as expressly provided by Appleton Grp, LLC (Appleton), Appleton products are intended for ultimate purchase by industrial users and for operation by persons trained and experienced in the use and maintenance of this equipment and not for consumers or consumer use. Appleton warranties DO NOT extend to, and no reseller is authorized to extend Appleton's warranties to any consumer. While every precaution has been taken to ensure accuracy and completeness in this manual, Appleton Grp, LLC, assumes no responsibility, and disclaims all liability for damages resulting from use of this information or for any errors or omissions. Specifications are subject to change without notice. The Appleton and Emerson logos are registered in the U.S. Patent and Trademark Office. All other product or service names are the property of their registered owners. ©2023 Appleton Grp, LLC. All rights reserved.