

Types B, HB, AB, RB, SB and SBT Specification Grade Insulated Bushings

For Rigid Metal Conduit, IMC and EMT.

NEC/CEC:

Listed for Ordinary Locations

Applications

- To protect insulated conductors from abrasion during pulling and from mechanical vibration.
- To provide voltage gradient between live conductors and ground at point of electrical and mechanical stress on conductor/insulation.

Features

- Molded-on high impact phenolic thermosetting insulation.
- UL insulation temperature rating 150°C.
- Positive metallic conduit stop.

Standard Materials

For Threaded Rigid and IMC

- **Type B:**
 - 1/2" and 3/4" - Steel
 - 1" to 6" - Malleable iron
- **Type HB:**
 - 1/2" and 3/4" - Steel
 - 1" to 6" - Malleable iron
- **Type AB:** Aluminum Bushing
- **Type RB:** Bronze, for highly corrosive atmospheres

For Threadless Rigid and IMC

- **Type SB:**
 - 1/2" and 3/4" - Steel
 - 1" to 6" - Malleable iron

For EMT

- **Type SBT:**
 - 1/2" and 3/4" - Steel
 - 1" to 6" - Malleable iron

Standard Finishes

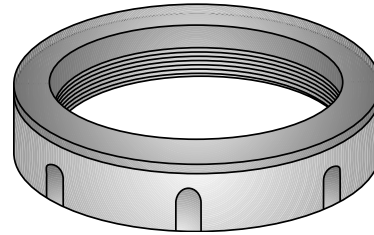
- **Type B:**
 - 1/2" and 3/4", 1" to 6" - Zinc plated
- **Type HB:**
 - 1/2" and 3/4", 1" to 6" - Mechanical/Hot dip galvanized
- **Type AB:** Aluminum Bushing
- **Type RB:** Bronze, for highly corrosive atmospheres
- **Type SB:**
 - 1/2" and 3/4", 1" to 6" - Zinc plated with stainless steel screws
- **Type SBT:**
 - 1/2" and 3/4", 1" to 6" - Zinc plated with stainless steel screws

Options

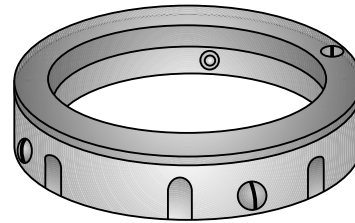
- Type B insulated bushings are also available for threadless rigid and IMC in the following materials:
- Type HSB: Malleable Iron or Steel Mechanical/Hot Dip Galvanized
- Type ASB: Aluminum
- Type RSB: Bronze

NEC/CEC Certifications and Compliances

- UL Standard: ANSI/UL 514B
- UL Listed: E-11853
- CSA Standard: C22.2 No. 18
- CSA Certified: 011584
- NEMA: FB-1



Type B
Threaded



Type SB
Threadless

Types B, HB, AB, RB, SB and SBT Specification Grade Insulated Bushings

For Rigid Metal Conduit, IMC and EMT.

NEC/CEC:
Listed for Ordinary Locations

Trade Size (Inches)	Threaded for Rigid Conduit and IMC Catalog Numbers				Threadless Rigid and IMC Catalog Numbers	EMT Catalog Numbers
	Malleable Iron or Steel/ Zinc Plated	Mechanically or Hot-Dip Galvanized	Copper Free Aluminum	Bronze	Malleable Iron or Steel/ Zinc Plated	Malleable Iron or Steel/ Zinc Plated
1/2	B-50	HB-50	AB-50	RB-50	SB-50	SBT-50
3/4	B-75	HB-75	AB-75	RB-75	SB-75	SBT-75
1	B-100	HB-100	AB-100	RB-100	SB-100	SBT-100
1-1/4	B-125	HB-125	AB-125	RB-125	SB-125	SBT-125
1-1/2	B-150	HB-150	AB-150	RB-150	SB-150	SBT-150
2	B-200	HB-200	AB-200	RB-200	SB-200	SBT-200
2-1/2	B-250	HB-250	AB-250	RB-250	SB-250	SB-250
3	B-300	HB-300	AB-300	RB-300	SB-300	SB-300
3-1/2	B-350	HB-350	AB-350	RB-350B	SB-350	SB-350
4	B-400	HB-400	AB-400	RB-400	SB-400	SB-400
5	B-500	HB-500	AB-500	RB-500	SB-500	—
6	B-600	HB-600	AB-600	RB-600	SB-600	—

Trade Size (Inches)	Dimensions in Millimeters (Inches)	
	Max. Dia.	Overall Height
1/2	28.70 (1.13)	38.10 (1.50)
3/4	35.05 (1.38)	16.00 (0.63)
1	41.40 (1.63)	19.05 (0.75)
1-1/4	50.80 (2.00)	19.05 (0.75)
1-1/2	57.15 (2.25)	19.05 (0.75)
2	69.85 (2.75)	22.35 (0.88)
2-1/2	82.55 (3.25)	25.40 (1.00)
3	101.60 (4.00)	25.40 (1.00)
3-1/2	114.30 (4.50)	25.40 (1.00)
4	127.00 (5.00)	28.70 (1.13)
5	158.75 (6.25)	31.75 (1.25)
6	187.45 (7.38)	35.05 (1.38)

OZ/GEDNEY™

COMMERCIAL AND INDUSTRIAL FITTINGS: BUSHINGS AND LOCKNUTS