

McGill™ 0801/0821 and 0811/0831 Series Rocker Switches

NEC/CEC:
Listed for Ordinary Locations

Applications

- Suitable for 20 Amp, 12 Vdc applications.
- Recognized for reliable, long service life by appliance manufacturers and manufacturers of industrial and commercial equipment.

Features

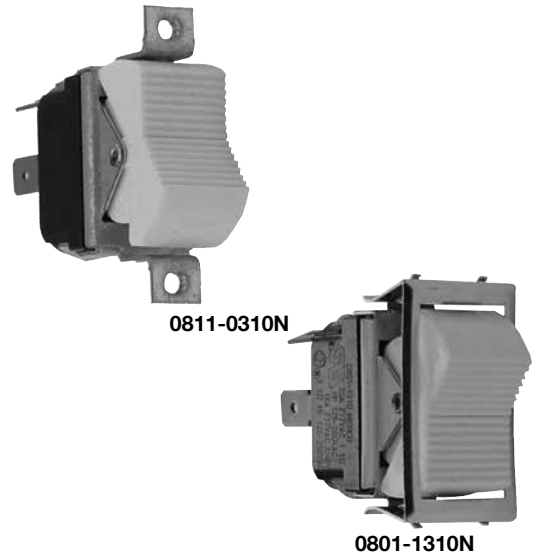
- Designed to fit full-size rectangular cutouts. Angled corners are suggested for optimum fit, but standard rectangular cutouts are acceptable.
- 1/4" Quick connect terminals standard on all switches.
- Multiple mounting styles - offset cover plate, metal snap-in bezel, nylon snap-in bezel.
- A wide variety of circuits are available to meet your specific requirements.
- McGill™ ensures extra reliability through mechanical excellence and a margin of electrical capacity - up to 20 Amps.
- White serrated gloss rocker style.

Standard Materials

- Contacts: silver plate
- Terminals: brass or copper
- Base: phenolic +150 °C (+302 °F)
- Rocker and nylon bracket: nylon 66 +105 °C (+221 °F)
- Spring steel snap-in nickel plated bezel
- Black gloss nylon snap-in bezel

NEC/CEC Certifications and Compliances

- UL Recognized Component
- UL File Number: E335442
- UL Standard: 1054, Guide WORY2
- CSA File Number: 249055
- CSA Standard: C22.2 No. 55
- RoHS Compliant



REELS AND SWITCHES: ORDINARY LOCATION SWITCHES

APPLETON™ OZ/GEDNEY™

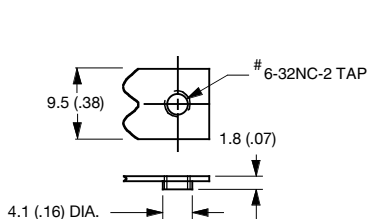
McGill™ 0801/0821 and 0811/0831 Series Rocker Switches

NEC/CEC:
Listed for Ordinary Locations

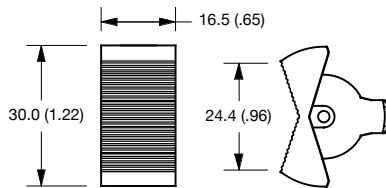
REELS AND SWITCHES: ORDINARY LOCATION SWITCHES

| Circuitry | | | Single Pole | | | | Double Pole | | |
|-----------|-----|-------|-----------------------|-------|---------------------|---|-------------|--------------------|---|
| A | B | C | Mounting | Poles | Catalog Number | Rating | Poles | Catalog Number | Rating |
| ON | — | OFF | Offset Coverplate | SPST | 0801-0310N | | DPST | 0811-0310N | |
| ON | — | OFF | Snap-in Bezel (Metal) | SPST | 0801-1310N | | DPST | 0811-1310N | |
| ON | OFF | ON | Offset Coverplate | SPDT | 0801-0311N | | DPDT | 0831-0311N | |
| ON | OFF | ON | Snap-in Bezel (Metal) | SPDT | 0801-1311N | | DPDT | 0831-1311N | |
| ON | — | ON | Offset Coverplate | SPDT | 0801-0312N | | DPDT | 0831-0312N | |
| ON | — | ON | Snap-in Bezel (Metal) | SPDT | 0801-1312N | 15 Amp, 125 Vac 10 Amp, 250 Vac 3/4 HP, 125-250 Vac | DPDT | 0831-1312N | 15 Amp, 125 Vac 10 Amp, 250 Vac 3/4 HP, 250 Vac |
| (ON) | — | OFF | Offset Coverplate | SPST | 0821-0313N | | DPST | 0831-0313N | |
| (ON) | — | OFF | Snap-in Bezel (Metal) | SPST | 0821-1313N | | DPST | 0831-1313N | |
| (ON) | OFF | (ON) | Offset Coverplate | SPDT | 0821-0314N | | DPDT | 0831-0314N | |
| (ON) | OFF | (ON) | Snap-in Bezel (Metal) | SPDT | 0821-1314N | | DPDT | 0831-1314N | |
| (ON) | OFF | ON | Offset Coverplate | SPDT | 0821-0316N | | DPDT | 0831-0316N | |
| (ON) | OFF | ON | Snap-in Bezel (Metal) | SPDT | 0821-1316N | | DPDT | 0831-1316N | |
| ON | — | (OFF) | Offset Coverplate | SPST | 0821-0317N † | | DPST | 0831-0317N | |
| ON | — | (OFF) | Snap-in Bezel (Metal) | SPST | 0821-1317N † | 15 Amp, 125 Vac 10 Amp, 250 Vac 3/4 HP, 250 Vac | DPST | 0831-1317N | 15 Amp, 125 Vac 10 Amp, 250 Vac 3/4 HP, 250 Vac |
| (ON) | — | ON | Offset Coverplate | SPDT | 0821-0318N | | DPDT | 0831-0318N | |
| (ON) | — | ON | Snap-in Bezel (Metal) | SPDT | 0821-1318N | | DPDT | 0831-1318N | |
| ON | — | OFF | Snap-in Bezel (Nylon) | SPST | 0801-1310AN | 20 Amp, 120-277 Vac | DPST | 0811-1310AN | 20 Amp, 120-277 Vac 1-1/2 HP, 125 Vac 3/4 HP, 125-250 Vac |
| ON | OFF | ON | Snap-in Bezel (Nylon) | SPDT | 0801-1311AN | 20 Amp, 120-277 Vac 1-1/2 HP, 125 Vac 3/4 HP, 125-250 Vac | DPDT | 0831-1311AN | 20 Amp, 120-277 Vac 1-1/2 HP, 125 Vac 3/4 HP, 125-250 Vac |
| ON | — | ON | Snap-in Bezel (Nylon) | SPDT | 0801-1312AN | | DPDT | 0831-1312AN | |

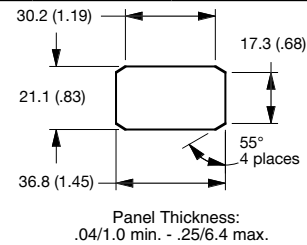
Dimensions in Millimeters (Inches)



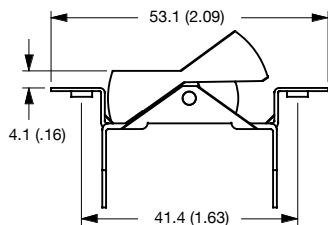
Tapped Hole



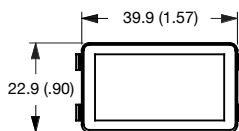
Rocker Switch



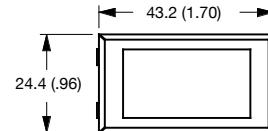
Mounting Hole



Offset Coverplate



Metal Snap-in Bezel



Nylon Snap-in Bezel

() Momentary. Poles: SP = single pole, DP = double pole, ST = single throw, DT = double throw.

† Not CSA or UL Approved.

Shaded catalog numbers are normally stocked items. All other items are made to order. Contact your local sales representative for pricing.