

# Industrial Areamaster™ Generation 2 and High Lumen LED Series Luminaires

## Floodlight

### Ordinary Locations

NEC/CEC/NOM: Type 3R, 4, 4X | IP66/67 | Marine outside type (salt water) for USA Only | Wet locations  
 IEC/CE CB: IK08 | IP66  
 Markings: CE | UKCA  
 Notable: American Bureau of Shipping (ABS) Certified | 10G Vibration – IAMLG, 5G Vibration – IAMLH

### Applications

- Powerful, efficient, weatherproof lighting fixtures suitable for use in a wide range of industrial areas, for example:
  - Steel Production Plants
  - Power Generation Facilities
  - Foundries
  - Cement, Stone and Sand Plants
  - Pulp and Paper Mills
  - Ship Building and Shipping Ports
  - Storage Areas
  - Security Lighting
  - Hydrogen and Biofuels plants
  - LNG (Liquid Natural Gas) plants
  - Other areas where corrosive, wet, dirty and tough environments are a problem
- IP66/IP67, Type 4X, marine and wet locations.
- Locations requiring dependable, consistent lighting in extreme hot/cold temperature environments.
  - 40 °C to +65 °C (-40 °F to +149 °F) ambient temperature range.
  - 40 °C to +55 °C (-40 °F to +131 °F) for high lumen IAMLHL3 output.
  - 55 °C (-67 °F) Cold Start option available for BU voltages only. See Catalog Numbering Guide for more details.

### Features

- Six lumen outputs provide up to 38,000 lumens.

| Nominal Lumens ① | HID Equivalent | Model Number |
|------------------|----------------|--------------|
| 9,500            | 175W-250W      | IAMLGL6      |
| 15,000           | 250W-400W      | IAMLGL7      |
| 19,500           | 400W-750W      | IAMLGL8      |
| 24,000           | 1000W          | IAMLHL1      |
| 30,000           | 1000-1500W     | IAMLHL2      |
| 38,000           | 1500W          | IAMLHL3      |

- Choice of optics for optimal light distribution in a variety of applications.
- Separate field wiring compartment with screw terminal block for easy and secure connection can accept 0.14 - 6 mm<sup>2</sup> (26 - 10 AWG) wire.
- Wiring compartment has two 3/4" NPT entries in bottom and one 3/4" NPT entry on top. Optional M20 metric adapters available.
- High Bay mounting achieved by using 3/4" NPT threaded non-penetrating blind hold centered in top of luminaire with integral set screw. Wire via wiring compartment.
- Yoke bracket is designed to accommodate traditional Areamaster brackets and slipfitters for easy retrofit. Optional stainless steel yoke bracket is available.
- Choice of color temperature (CCT): 5000K (70 CRI) cool white, 4000K (80 CRI) neutral white, 3000K (80 CRI) warm white, 1800K (70 CRI), or Amber (56 CRI).
- L70 Ratings:
 

|                     |            |                 |
|---------------------|------------|-----------------|
| +25 °C (+77 °F)     | Reported   | > 60,000 hours  |
| Ambient Temperature | Calculated | > 200,000 hours |
| +65 °C (+149 °F)    | Reported   | > 60,000 hours  |
| Ambient Temperature | Calculated | > 135,000 hours |
- Rugged and compact housing with superior thermal design translates to long luminaire life.
- Heavy duty, high temperature silicone rubber gaskets.
- 0-10 Vdc Dimming standard for all configurations.
- Thermal shock and impact resistant clear or frosted glass lens.



- Standard 6 kV/3 kA surge protection. Optional 10 kV/5 kA additional surge protection available.
- Captive fasteners secure one piece lens.
- Field replaceable LED driver and lens cover.
- Photometric data and electronic drawings available upon request.

### Warranty ☺

- 10 year standard warranty.

### Controls

- Dimming:
  - Luminaire has a two-wire, 0-10Vdc variable dimming input port for controlling the light output.
  - Standard operating temperature models: from 10% to 100% of the rated lumen output.
  - Cold temperature option models: from 0% to 100% of the rated lumen output.
- Group Lighting Controls:
  - Simplify installation of energy saving lighting controls.
  - Control up to 10 luminaires over a distance of 60 meters (200 ft) with Mercmaster Connect LED integrated dimming controller.
  - Daisy chain the luminaires on the same circuit breaker by wiring the 0-10V dimming leads to the Connected luminaire. Enable the Mercmaster Connect's advanced capabilities to extend daylight harvesting (adjustable output), motion sensing (up to 12 meters [40 ft]) and scheduling features (up to 4 time periods per day) with the group of lights.
  - Optionally commission and monitor the group of lights remotely via our Plantweb Insight™ Connected Lighting App.

### Options

- Improved safety cable design with multiple retention points, *purchase separately*.
- Guard and visor available, *purchase separately*.
- Slip-fitters and mounting brackets available for easy pole or wall mounting.
- Stainless steel yoke bracket.
- 10 kV/5 kA Surge Protection
- For custom paint colors, contact your Appleton Sales Representative. Minimum quantity applies.

### Standard Materials

- Housing and lens cover: copperfree (4/10 of 1% max.) aluminum
- Gaskets: silicone rubber
- Yoke: zinc plated steel
- Bolts: stainless steel
- Close up plugs: (2) aluminum provided
- Guard and safety cable: stainless steel
- Visor: Aluminum

### Standard Finishes

- Housing, lens cover, visor and yoke mount: architectural bronze polyester

① Nominal lumen value for 5000K, NEMA 7x7, with clear glass. Detailed lumen information provided in tables.

☺ For warranty details go to [www.appleton.emerson.com](http://www.appleton.emerson.com).

# Industrial Areamaster™ Generation 2 and High Lumen LED Series Luminaires

## Floodlight

### Ordinary Locations

NEC/CEC/NOM: Type 3R, 4, 4X | IP66/67 | Marine outside type (salt water) for USA Only | Wet locations  
 IECEE CB: IK08 | IP66  
 Markings: CE | UKCA  
 Notable: American Bureau of Shipping (ABS) Certified | 10G Vibration – IANGL, 5G Vibration – IANLH

#### NEC/CEC Certifications and Compliances

- UL Standards: UL1598; UL1598A; UL 8750
- CSA Standards: CSA C22.2 No. 250.0
- cETLus 104364566CHI-001, 104364566CHI-002
- Vibration Rating: 10G for 10 hours – IANGL, 5G for 1.5 hours - IANLH

#### NOM: Norma Oficial Mexicana

- NOM-003-SCFI-2014 (NMX-J-307-ANCE-2017)
- NOM Certificate: ULM-NOM-15621

#### IECEE CB Certificates and Compliances

- IEC 60598-1, IEC 60598-2-1, and IEC 60598-2-5
- IECEE CB Certificates: CB 164460-80075815 and CB 164460-80075818
- Index of Protection according to EN/IEC 60529: IP66
- Impact Resistance (shock): IK08
- Photobiological Safety, IEC 62778 and IEC 62471: Risk Group 1 (RG1)

#### CE and UKCA Marking

- Safety: EN 60598-1, EN 60598-2-1, and EN 60598-2-5
- EMC: EN 61547, 61000-6-2, 61000-6-4, 61000-3-2; CISPR 15

#### ABS Certifications

IANGL and IANLH: 23-2443580-PDA

#### DesignLights™ Consortium

- Check DLC QPL for current list of products.

#### Related Products

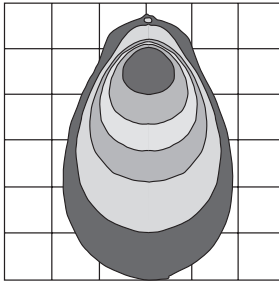
- Areamaster Generation 2 and High Lumen LED Luminaires
- Round Tapered Steel Poles
- Hinged Steel Poles
- Square Tapered Steel Poles
- Square Steel Poles
- Floodlight Mounting Brackets

## Illustrated Features

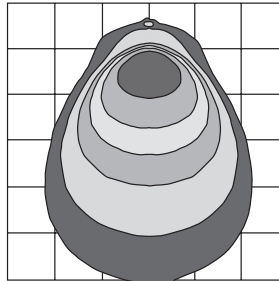
### Light Where You Need It

Choose from 3 color temperatures and a variety of secondary optics to put light where your application needs it most. Unsure of which optic is best for your job? Contact your sales representative to get a free 3D Dialux simulation.

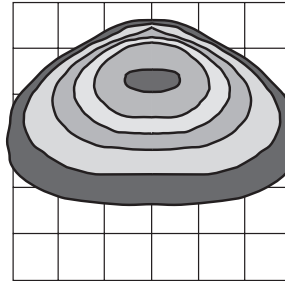
### The Right Beam Pattern for Your Application



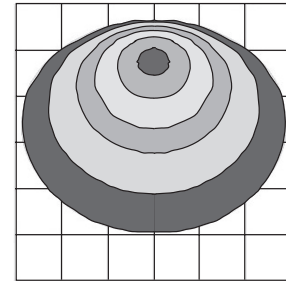
**NEMA 3x3** – Very Narrow, spot type forward intensity focus. Enables highest mounting heights (30 m / 100 ft +) while maintaining delivered light on surface (footcandles/lux).



**NEMA 5x5** – Narrow, spot type forward intensity focus. Enables higher mounting heights (15 m / 50 ft +) while maintaining delivered light on surface (footcandles/lux).

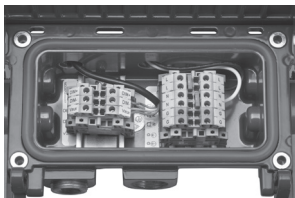


**NEMA 7x6** – Mimics traditional HID light distribution. Light intensity is directed forward and side-to-side to maximize spacing between luminaires.

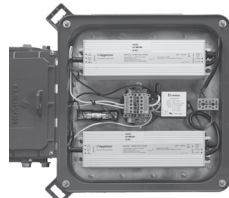


**NEMA 7x7** – Uniform light spread, perfect for most typical flood lighting applications.

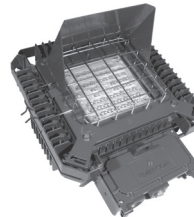
## Robust Design



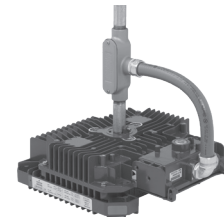
**Front-Facing Wiring Compartment:** Gasketed front wiring compartment with screw terminal block, and captive screws offers unmatched installation ease and convenience.



**Replaceable Drivers:** Easy to access, field replaceable drivers extend the useful life of your luminaire up to 200,000 hours or more.



**Visor and Guard:** Comply with light pollution regulations or control light spread with a visor. Protect the lens with a guard.



**High Bay Mount:** Use 3/4" NPT threaded non-penetrating blind hold centered in top of luminaire with integral set screw. Wire via wiring compartment.

# Industrial Areamaster™ Generation 2 and High Lumen LED Series Luminaires

Floodlight

Ordinary Locations

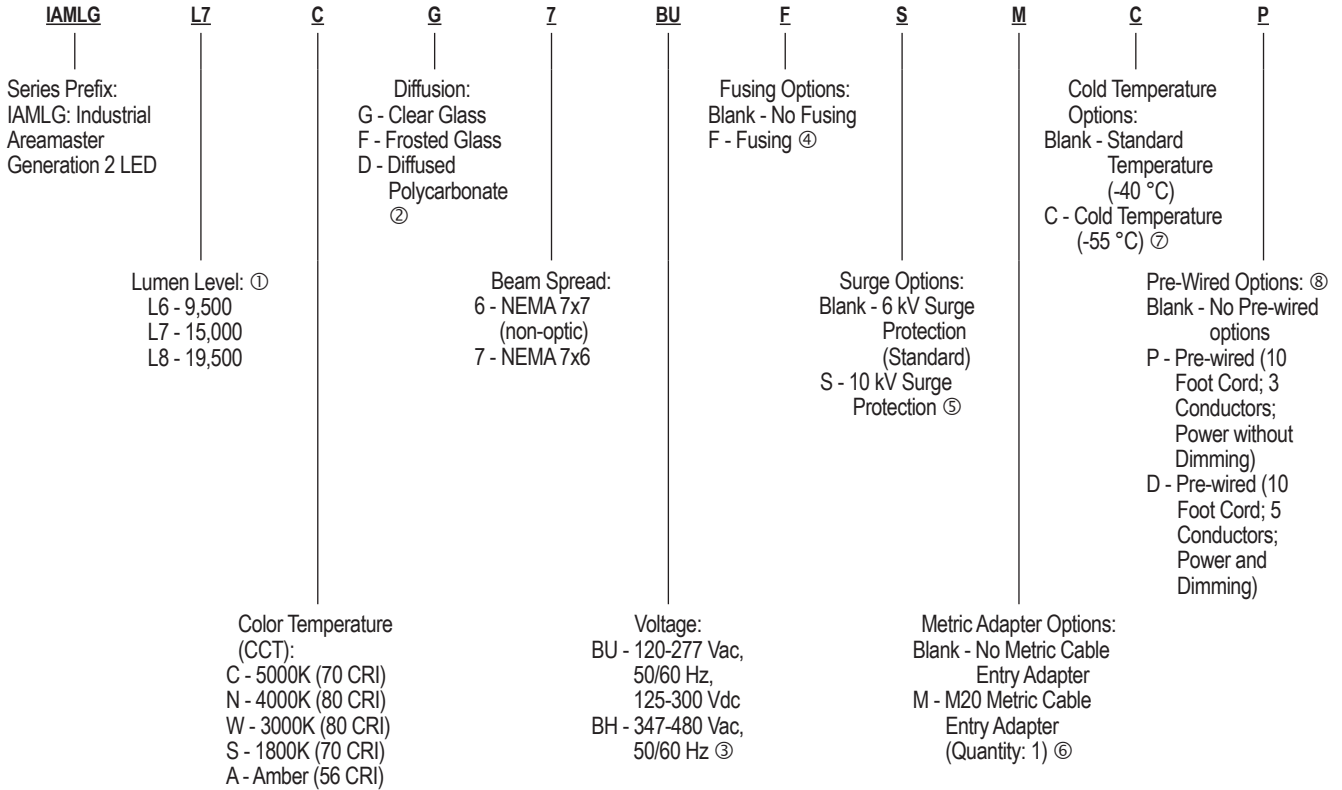
NEC/CEC/NOM: Type 3R, 4, 4X | IP66/67 | Marine outside type (salt water) for USA Only | Wet locations

IECEE CB: IK08 | IP66

Markings: CE | UKCA

Notable: American Bureau of Shipping (ABS) Certified | 10G Vibration – IANLH, 5G Vibration – IANLH

## Order Using Catalog Numbering Guide — Industrial Areamaster™ Generation 2 Series Luminaires — Low Lumen Model



① All lumen values are typical (tolerance +/- 10%).

② Diffused Polycarbonate lens available for NEC/CEC only. Diffused Polycarbonate lens not available with Cold Start option.

③ BH voltage available for NEC/CEC only. BH voltage not available with Cold Start option.

④ Use of fuse voids Marine rating. Fusing available for NEC/CEC only. Fusing not available with Cold Start option.

⑤ 10kV Surge Protection not available with Cold Start option.

⑥ M20 Metric Cable Entry Adapter not available with Pre-Wired options.

⑦ Cold Start option available for NEC/CEC only. Cold Start option not available with Diffused Polycarbonate lens, BH voltage, Fusing or 10kV Surge Protection.

⑧ Pre-Wiring available for NEC/CEC only. Pre-Wiring not available with Metric Adapter option. Cord grip used with Pre-Wiring option is Type 3R rated. IP66/IP67 and Marine rating is not available with Pre-Wiring option.

# Industrial Areamaster™ Generation 2 and High Lumen LED Series Luminaires

Floodlight

Ordinary Locations

NEC/CEC/NOM: Type 3R, 4, 4X | IP66/67 | Marine outside type (salt water) for USA Only | Wet locations

IECEE CB: IK08 | IP66

Markings: CE | UKCA

Notable: American Bureau of Shipping (ABS) Certified | 10G Vibration – IANLH, 5G Vibration – IANLH

## Order Using Catalog Numbering Guide — Industrial Areamaster™ LED Series Luminaires — High Lumen Model

|  |  |  |   |   |   |   |   |   |  |  |
|--|--|--|---|---|---|---|---|---|--|--|
| <p><b>IAMLH</b></p> <p>Series Prefix:<br/>IAMLH: Industrial<br/>Areamaster<br/>Generation 2 HL<br/>LED</p> | <p><b>L2</b></p> <p>Lumen Level: ①<br/>L1 - 24,000<br/>L2 - 30,000<br/>L3 - 38,000</p> | <p><b>C</b></p> <p>Color Temperature<br/>(CCT):<br/>C - 5000K (70 CRI)<br/>N - 4000K (80 CRI)<br/>W - 3000K (80 CRI)<br/>S - 1800K (70 CRI)<br/>A - Amber (56 CRI)</p> | <p><b>G</b></p> <p>Diffusion:<br/>G - Clear Glass<br/>F - Frosted Glass</p> | <p><b>Z</b></p> <p>Beam Spread:<br/>3 - NEMA 3x3<br/>5 - NEMA 5x5<br/>6 - NEMA 7x7<br/>(non-optic)<br/>7 - NEMA 7x6</p> | <p><b>BU</b></p> <p>Voltage:<br/>BU - 120-277 Vac,<br/>50/60 Hz,<br/>125-300 Vdc<br/>BH - 347-480 Vac,<br/>50/60 Hz ②</p> | <p><b>F</b></p> <p>Fusing Options:<br/>Blank - No Fusing<br/>F - Fusing ③</p> | <p><b>S</b></p> <p>Surge Options:<br/>Blank - 6 kV Surge<br/>Protection<br/>(Standard)<br/>S - 10 kV Surge<br/>Protection ④</p> | <p><b>M</b></p> <p>Metric Adapter<br/>Options:<br/>Blank - No Metric<br/>Cable Entry<br/>Adapter<br/>M - M20 Metric Cable<br/>Entry Adapter<br/>(Quantity: 1) ⑤</p> | <p><b>C</b></p> <p>Cold Temperature<br/>Options:<br/>Blank - Standard<br/>Temperature<br/>(-40 °C)<br/>C - Cold Temperature<br/>(-55 °C) ⑥</p> | <p><b>P</b></p> <p>Pre-Wired Options: ⑦<br/>Blank - No Pre-wired<br/>options<br/>P - Pre-wired (10<br/>Foot Cord; 3<br/>Conductors;<br/>Power without<br/>Dimming)<br/>D - Pre-wired (10<br/>Foot Cord; 5<br/>Conductors;<br/>Power and<br/>Dimming)</p> |
|--|--|--|---|---|---|---|---|---|--|--|

① All lumen values are typical (tolerance +/- 10%).

② BH voltage available for NEC/CEC only. BH voltage not available with Cold Start option.

③ Use of fuse voids Marine rating. Fusing available for NEC/CEC only. Fusing not available with Cold Start option.

④ 10kV Surge Protection not available with Cold Start option.

⑤ M20 Metric Cable Entry Adapter not available with Pre-Wired options.

⑥ Cold Start option available for NEC/CEC only. Cold Start option not available with BH voltage, Fusing or 10kV Surge Protection.

⑦ Pre-Wiring available for NEC/CEC only. Pre-Wiring not available with Metric Adapter option. Cord grip used with Pre-Wiring option is Type 3R rated. IP66/IP67 and Marine rating is not available with Pre-Wiring option.

# Industrial Areamaster™ Generation 2 and High Lumen LED Series Luminaires

Floodlight

Ordinary Locations

NEC/CEC/NOM: Type 3R, 4, 4X | IP66/67 | Marine outside type (salt water) for USA Only | Wet locations

IECEE CB: IK08 | IP66

Markings: CE | UKCA

Notable: American Bureau of Shipping (ABS) Certified | 10G Vibration – IAMLG, 5G Vibration – IAMLH

## Lumen Output (Efficacy) — Low Lumen Model ① 3000K, 4000K, 5000K

| Model                         | HID Equivalency | Light Distribution Pattern | CCT (Correlated Color Temperature) | CRI (Color Rendering Index) | Lumen Output | Efficacy (lm/W) | CCT   | CRI | Lumen Output | Efficacy (lm/W) | CCT   | CRI | Lumen Output | Efficacy (lm/W) |
|-------------------------------|-----------------|----------------------------|------------------------------------|-----------------------------|--------------|-----------------|-------|-----|--------------|-----------------|-------|-----|--------------|-----------------|
| <b>Clear Glass</b>            |                 |                            |                                    |                             |              |                 |       |     |              |                 |       |     |              |                 |
| IAMLGL6                       | 175-250W        | NEMA 7x6                   | 3000K                              | 80                          | 7,350        | 105             | 4000K | 80  | 8,500        | 121             | 5000K | 70  | 9,500        | 136             |
|                               |                 | NEMA 7x7                   | 3000K                              | 80                          | 7,650        | 109             | 4000K | 80  | 9,000        | 129             | 5000K | 70  | 9,900        | 141             |
| IAMLGL7                       | 250-400W        | NEMA 7x6                   | 3000K                              | 80                          | 11,000       | 99              | 4000K | 80  | 12,950       | 117             | 5000K | 70  | 14,500       | 131             |
|                               |                 | NEMA 7x7                   | 3000K                              | 80                          | 11,500       | 104             | 4000K | 80  | 13,650       | 123             | 5000K | 70  | 15,000       | 135             |
| IAMLGL8                       | 400-750W        | NEMA 7x6                   | 3000K                              | 80                          | 14,500       | 95              | 4000K | 80  | 16,550       | 109             | 5000K | 70  | 18,500       | 122             |
|                               |                 | NEMA 7x7                   | 3000K                              | 80                          | 15,000       | 99              | 4000K | 80  | 17,550       | 115             | 5000K | 70  | 19,500       | 128             |
| <b>Frosted Glass</b>          |                 |                            |                                    |                             |              |                 |       |     |              |                 |       |     |              |                 |
| IAMLGL6                       | 175-250W        | NEMA 7x6                   | 3000K                              | 80                          | 6,200        | 89              | 4000K | 80  | 7,200        | 103             | 5000K | 70  | 7,900        | 113             |
|                               |                 | NEMA 7x7                   | 3000K                              | 80                          | 6,400        | 91              | 4000K | 80  | 7,500        | 107             | 5000K | 70  | 8,300        | 119             |
| IAMLGL7                       | 250-400W        | NEMA 7x6                   | 3000K                              | 80                          | 9,400        | 85              | 4000K | 80  | 10,950       | 99              | 5000K | 70  | 12,000       | 108             |
|                               |                 | NEMA 7x7                   | 3000K                              | 80                          | 9,700        | 87              | 4000K | 80  | 11,350       | 102             | 5000K | 70  | 12,500       | 113             |
| IAMLGL8                       | 400-750W        | NEMA 7x6                   | 3000K                              | 80                          | 12,000       | 79              | 4000K | 80  | 14,000       | 92              | 5000K | 70  | 15,550       | 102             |
|                               |                 | NEMA 7x7                   | 3000K                              | 80                          | 12,500       | 82              | 4000K | 80  | 14,500       | 95              | 5000K | 70  | 16,550       | 109             |
| <b>Diffused Polycarbonate</b> |                 |                            |                                    |                             |              |                 |       |     |              |                 |       |     |              |                 |
| IAMLGL6                       | 175-250W        | NEMA 7x6                   | 3000K                              | 80                          | 5,950        | 85              | 4000K | 80  | 6,950        | 99              | 5000K | 70  | 7,700        | 110             |
|                               |                 | NEMA 7x7                   | 3000K                              | 80                          | 6,250        | 89              | 4000K | 80  | 7,300        | 104             | 5000K | 70  | 8,050        | 115             |
| IAMLGL7                       | 250-400W        | NEMA 7x6                   | 3000K                              | 80                          | 9,000        | 81              | 4000K | 80  | 10,550       | 95              | 5000K | 70  | 11,700       | 105             |
|                               |                 | NEMA 7x7                   | 3000K                              | 80                          | 9,450        | 85              | 4000K | 80  | 11,000       | 99              | 5000K | 70  | 12,200       | 110             |
| IAMLGL8                       | 400-750W        | NEMA 7x6                   | 3000K                              | 80                          | 11,500       | 76              | 4000K | 80  | 13,500       | 89              | 5000K | 70  | 15,000       | 99              |
|                               |                 | NEMA 7x7                   | 3000K                              | 80                          | 12,100       | 80              | 4000K | 80  | 14,150       | 93              | 5000K | 70  | 15,650       | 103             |

① All lumen values are typical (tolerance +/-10%).

# Industrial Areamaster™ Generation 2 and High Lumen LED Series Luminaires

Floodlight

Ordinary Locations

NEC/CEC/NOM: Type 3R, 4, 4X | IP66/67 | Marine outside type (salt water) for USA Only | Wet locations

IECEE CB: IK08 | IP66

Markings: CE | UKCA

Notable: American Bureau of Shipping (ABS) Certified | 10G Vibration – IAMLG, 5G Vibration – IAMLH

## Lumen Output (Efficacy) — Low Lumen Model ① Amber, 1800K

| Model                         | HID Equivalency | Light Distribution Pattern | CCT (Correlated Color Temperature) | CRI (Color Rendering Index) | Lumen Output | Efficacy (lm/W) | CCT   | CRI | Lumen Output | Efficacy (lm/W) |
|-------------------------------|-----------------|----------------------------|------------------------------------|-----------------------------|--------------|-----------------|-------|-----|--------------|-----------------|
| <b>Clear Glass</b>            |                 |                            |                                    |                             |              |                 |       |     |              |                 |
| IAMLGL6                       | 175-250W        | NEMA 7x6                   | Amber                              | 56                          | 5,400        | 78              | 1800K | 70  | 6,150        | 89              |
|                               |                 | NEMA 7x7                   | Amber                              | 56                          | 5,900        | 82              | 1800K | 70  | 6,700        | 94              |
| IAMLGL7                       | 250-400W        | NEMA 7x6                   | Amber                              | 56                          | 8,150        | 73              | 1800K | 70  | 9,300        | 84              |
|                               |                 | NEMA 7x7                   | Amber                              | 56                          | 8,550        | 78              | 1800K | 70  | 9,800        | 89              |
| IAMLGL8                       | 400-750W        | NEMA 7x6                   | Amber                              | 56                          | 10,150       | 67              | 1800K | 70  | 11,650       | 77              |
|                               |                 | NEMA 7x7                   | Amber                              | 56                          | 10,450       | 69              | 1800K | 70  | 12,250       | 81              |
| <b>Frosted Glass</b>          |                 |                            |                                    |                             |              |                 |       |     |              |                 |
| IAMLGL6                       | 175-250W        | NEMA 7x6                   | Amber                              | 56                          | 4,550        | 66              | 1800K | 70  | 5,250        | 76              |
|                               |                 | NEMA 7x7                   | Amber                              | 56                          | 4,950        | 69              | 1800K | 70  | 5,600        | 79              |
| IAMLGL7                       | 250-400W        | NEMA 7x6                   | Amber                              | 56                          | 6,900        | 63              | 1800K | 70  | 7,900        | 71              |
|                               |                 | NEMA 7x7                   | Amber                              | 56                          | 7,150        | 65              | 1800K | 70  | 8,250        | 75              |
| IAMLGL8                       | 400-750W        | NEMA 7x6                   | Amber                              | 56                          | 8,500        | 56              | 1800K | 70  | 9,950        | 66              |
|                               |                 | NEMA 7x7                   | Amber                              | 56                          | 8,800        | 58              | 1800K | 70  | 10,300       | 68              |
| <b>Diffused Polycarbonate</b> |                 |                            |                                    |                             |              |                 |       |     |              |                 |
| IAMLGL6                       | 175-250W        | NEMA 7x6                   | Amber                              | 56                          | 4,300        | 62              | 1800K | 70  | 4,950        | 72              |
|                               |                 | NEMA 7x7                   | Amber                              | 56                          | 4,700        | 66              | 1800K | 70  | 5,350        | 75              |
| IAMLGL7                       | 250-400W        | NEMA 7x6                   | Amber                              | 56                          | 6,600        | 60              | 1800K | 70  | 7,500        | 67              |
|                               |                 | NEMA 7x7                   | Amber                              | 56                          | 6,850        | 62              | 1800K | 70  | 7,850        | 71              |
| IAMLGL8                       | 400-750W        | NEMA 7x6                   | Amber                              | 56                          | 8,050        | 53              | 1800K | 70  | 9,450        | 62              |
|                               |                 | NEMA 7x7                   | Amber                              | 56                          | 8,350        | 55              | 1800K | 70  | 9,850        | 65              |

① All lumen values are typical (tolerance +/-10%).



# Industrial Areamaster™ Generation 2 and High Lumen LED Series Luminaires

Floodlight

Ordinary Locations

NEC/CEC/NOM: Type 3R, 4, 4X | IP66/67 | Marine outside type (salt water) for USA Only | Wet locations

IECEE CB: IK08 | IP66

Markings: CE | UKCA

Notable: American Bureau of Shipping (ABS) Certified | 10G Vibration – IANL, 5G Vibration – IANLH

## Lumen Output (Efficacy) — High Lumen Model ① 3000K, 4000K, 5000K

| Model              | HID Equivalency | Light Distribution Pattern | CCT (Correlated Color Temperature) | CRI (Color Rendering Index) | Lumen Output | Efficacy (lm/W) | CCT   | CRI | Lumen Output | Efficacy (lm/W) | CCT   | CRI | Lumen Output | Efficacy (lm/W) |
|--------------------|-----------------|----------------------------|------------------------------------|-----------------------------|--------------|-----------------|-------|-----|--------------|-----------------|-------|-----|--------------|-----------------|
| <b>Clear Glass</b> |                 |                            |                                    |                             |              |                 |       |     |              |                 |       |     |              |                 |
| IAMLHL1            | 1000W           | NEMA 3x3                   | 3000K                              | 80                          | 19,350       | 109             | 4000K | 80  | 20,250       | 114             | 5000K | 70  | 22,750       | 128             |
|                    |                 | NEMA 5x5                   | 3000K                              | 80                          | 20,850       | 117             | 4000K | 80  | 21,900       | 123             | 5000K | 70  | 25,000       | 140             |
|                    |                 | NEMA 7x6                   | 3000K                              | 80                          | 19,000       | 107             | 4000K | 80  | 20,500       | 115             | 5000K | 70  | 23,000       | 129             |
|                    |                 | NEMA 7x7                   | 3000K                              | 80                          | 20,100       | 113             | 4000K | 80  | 21,300       | 120             | 5000K | 70  | 24,250       | 136             |
| IAMLHL2            | 1000-1500W      | NEMA 3x3                   | 3000K                              | 80                          | 23,450       | 106             | 4000K | 80  | 24,600       | 111             | 5000K | 70  | 27,500       | 124             |
|                    |                 | NEMA 5x5                   | 3000K                              | 80                          | 25,500       | 115             | 4000K | 80  | 26,700       | 120             | 5000K | 70  | 30,000       | 135             |
|                    |                 | NEMA 7x6                   | 3000K                              | 80                          | 23,200       | 105             | 4000K | 80  | 25,000       | 113             | 5000K | 70  | 27,950       | 126             |
| IAMLHL3            | 1500W           | NEMA 7x7                   | 3000K                              | 80                          | 24,650       | 111             | 4000K | 80  | 26,100       | 118             | 5000K | 70  | 29,750       | 134             |
|                    |                 | NEMA 3x3                   | 3000K                              | 80                          | 29,500       | 99              | 4000K | 80  | 30,950       | 104             | 5000K | 70  | 34,750       | 117             |
|                    |                 | NEMA 5x5                   | 3000K                              | 80                          | 32,000       | 107             | 4000K | 80  | 33,600       | 113             | 5000K | 70  | 37,500       | 126             |
| IAMLHL3            | 1500W           | NEMA 7x6                   | 3000K                              | 80                          | 29,300       | 98              | 4000K | 80  | 31,500       | 106             | 5000K | 70  | 35,350       | 119             |
|                    |                 | NEMA 7x7                   | 3000K                              | 80                          | 31,000       | 104             | 4000K | 80  | 32,800       | 110             | 5000K | 70  | 37,400       | 126             |
|                    |                 | NEMA 3x3                   | 3000K                              | 80                          | 17,200       | 97              | 4000K | 80  | 17,950       | 101             | 5000K | 70  | 20,000       | 112             |
| IAMLHL1            | 1000W           | NEMA 5x5                   | 3000K                              | 80                          | 18,600       | 104             | 4000K | 80  | 19,350       | 109             | 5000K | 70  | 21,550       | 121             |
|                    |                 | NEMA 7x6                   | 3000K                              | 80                          | 16,150       | 91              | 4000K | 80  | 17,300       | 97              | 5000K | 70  | 19,500       | 110             |
|                    |                 | NEMA 7x7                   | 3000K                              | 80                          | 16,850       | 95              | 4000K | 80  | 18,000       | 101             | 5000K | 70  | 20,500       | 115             |
|                    |                 | NEMA 3x3                   | 3000K                              | 80                          | 21,000       | 95              | 4000K | 80  | 21,950       | 99              | 5000K | 70  | 24,750       | 111             |
| IAMLHL2            | 1000-1500W      | NEMA 5x5                   | 3000K                              | 80                          | 22,650       | 102             | 4000K | 80  | 23,600       | 106             | 5000K | 70  | 26,000       | 117             |
|                    |                 | NEMA 7x6                   | 3000K                              | 80                          | 19,600       | 88              | 4000K | 80  | 21,000       | 95              | 5000K | 70  | 23,700       | 107             |
|                    |                 | NEMA 7x7                   | 3000K                              | 80                          | 20,550       | 93              | 4000K | 80  | 21,950       | 99              | 5000K | 70  | 25,000       | 113             |
| IAMLHL3            | 1500W           | NEMA 3x3                   | 3000K                              | 80                          | 26,400       | 89              | 4000K | 80  | 27,500       | 92              | 5000K | 70  | 31,000       | 104             |
|                    |                 | NEMA 5x5                   | 3000K                              | 80                          | 28,600       | 96              | 4000K | 80  | 29,750       | 100             | 5000K | 70  | 33,500       | 112             |
|                    |                 | NEMA 7x6                   | 3000K                              | 80                          | 24,750       | 83              | 4000K | 80  | 26,550       | 89              | 5000K | 70  | 29,950       | 101             |
| IAMLHL3            | 1500W           | NEMA 7x7                   | 3000K                              | 80                          | 26,000       | 87              | 4000K | 80  | 27,700       | 93              | 5000K | 70  | 31,500       | 106             |

① All lumen values are typical (tolerance +/-10%).

# Industrial Areamaster™ Generation 2 and High Lumen LED Series Luminaires

Floodlight

Ordinary Locations

NEC/CEC/NOM: Type 3R, 4, 4X | IP66/67 | Marine outside type (salt water) for USA Only | Wet locations

IECEE CB: IK08 | IP66

Markings: CE | UKCA

Notable: American Bureau of Shipping (ABS) Certified | 10G Vibration – IAMLG, 5G Vibration – IAMLH

## Lumen Output (Efficacy) — High Lumen Model ① Amber, 1800K

| Model                | HID Equivalency | Light Distribution Pattern | CCT (Correlated Color Temperature) | CRI (Color Rendering Index) | Lumen Output | Efficacy (lm/W) | CCT   | CRI | Lumen Output | Efficacy (lm/W) |
|----------------------|-----------------|----------------------------|------------------------------------|-----------------------------|--------------|-----------------|-------|-----|--------------|-----------------|
| <b>Clear Glass</b>   |                 |                            |                                    |                             |              |                 |       |     |              |                 |
| IAMLHL1              | 1000W           | NEMA 3x3                   | Amber                              | 56                          | 14,050       | 76              | 1800K | 70  | 14,450       | 78              |
|                      |                 | NEMA 5x5                   | Amber                              | 56                          | 14,350       | 78              | 1800K | 70  | 15,900       | 86              |
|                      |                 | NEMA 7x6                   | Amber                              | 56                          | 13,350       | 73              | 1800K | 70  | 15,050       | 82              |
|                      |                 | NEMA 7x7                   | Amber                              | 56                          | 14,150       | 77              | 1800K | 70  | 15,850       | 86              |
| IAMLHL2              | 1000-1500W      | NEMA 3x3                   | Amber                              | 56                          | 16,200       | 73              | 1800K | 70  | 16,850       | 76              |
|                      |                 | NEMA 5x5                   | Amber                              | 56                          | 16,700       | 75              | 1800K | 70  | 18,600       | 83              |
|                      |                 | NEMA 7x6                   | Amber                              | 56                          | 15,600       | 71              | 1800K | 70  | 17,550       | 79              |
|                      |                 | NEMA 7x7                   | Amber                              | 56                          | 16,550       | 75              | 1800K | 70  | 18,500       | 83              |
| IAMLHL3              | 1500W           | NEMA 3x3                   | Amber                              | 56                          | 18,750       | 63              | 1800K | 70  | 19,850       | 67              |
|                      |                 | NEMA 5x5                   | Amber                              | 56                          | 19,850       | 67              | 1800K | 70  | 21,850       | 73              |
|                      |                 | NEMA 7x6                   | Amber                              | 56                          | 18,450       | 62              | 1800K | 70  | 20,700       | 69              |
|                      |                 | NEMA 7x7                   | Amber                              | 56                          | 19,500       | 66              | 1800K | 70  | 21,800       | 73              |
| <b>Frosted Glass</b> |                 |                            |                                    |                             |              |                 |       |     |              |                 |
| IAMLHL1              | 1000W           | NEMA 3x3                   | Amber                              | 56                          | 12,500       | 68              | 1800K | 70  | 12,850       | 70              |
|                      |                 | NEMA 5x5                   | Amber                              | 56                          | 12,650       | 69              | 1800K | 70  | 14,200       | 77              |
|                      |                 | NEMA 7x6                   | Amber                              | 56                          | 11,350       | 62              | 1800K | 70  | 13,000       | 71              |
|                      |                 | NEMA 7x7                   | Amber                              | 56                          | 12,000       | 66              | 1800K | 70  | 13,500       | 73              |
| IAMLHL2              | 1000-1500W      | NEMA 3x3                   | Amber                              | 56                          | 14,250       | 64              | 1800K | 70  | 15,000       | 67              |
|                      |                 | NEMA 5x5                   | Amber                              | 56                          | 14,850       | 67              | 1800K | 70  | 16,500       | 74              |
|                      |                 | NEMA 7x6                   | Amber                              | 56                          | 13,250       | 60              | 1800K | 70  | 15,200       | 68              |
|                      |                 | NEMA 7x7                   | Amber                              | 56                          | 14,050       | 63              | 1800K | 70  | 15,800       | 71              |
| IAMLHL3              | 1500W           | NEMA 3x3                   | Amber                              | 56                          | 16,950       | 57              | 1800K | 70  | 17,650       | 59              |
|                      |                 | NEMA 5x5                   | Amber                              | 56                          | 17,400       | 59              | 1800K | 70  | 19,500       | 65              |
|                      |                 | NEMA 7x6                   | Amber                              | 56                          | 15,800       | 53              | 1800K | 70  | 17,900       | 60              |
|                      |                 | NEMA 7x7                   | Amber                              | 56                          | 16,450       | 55              | 1800K | 70  | 18,600       | 62              |

① All lumen values are typical (tolerance +/-10%).



# Industrial Areamaster™ Generation 2 and High Lumen LED Series Luminaires

Floodlight

Ordinary Locations

NEC/CEC/NOM: Type 3R, 4, 4X | IP66/67 | Marine outside type (salt water) for USA Only | Wet locations

IECEE CB: IK08 | IP66

Markings: CE | UKCA

Notable: American Bureau of Shipping (ABS) Certified | 10G Vibration – IAMLG, 5G Vibration – IAMLH

## Electrical Specifications ①

| Model                   | Voltage | Input Power (Watts) | Input Current (Amps) | Power Factor (PF) | Total Harmonic Distortion (THD) |
|-------------------------|---------|---------------------|----------------------|-------------------|---------------------------------|
| <b>Low Lumen Model</b>  |         |                     |                      |                   |                                 |
| IAMLGL6                 | 120 Vac | 73                  | 0.62                 | >.9               | <20%                            |
|                         | 277 Vac | 71                  | 0.27                 |                   |                                 |
|                         | 125 Vdc | 69                  | 0.55                 | N/A               | N/A                             |
|                         | 300 Vdc | 68                  | 0.23                 |                   |                                 |
|                         | 347 Vac | 71                  | 0.21                 | >.9               | <20%                            |
|                         | 480 Vac | 71                  | 0.16                 |                   |                                 |
| IAMLGL7                 | 120 Vac | 111                 | 0.94                 | >.9               | <20%                            |
|                         | 277 Vac | 106                 | 0.43                 |                   |                                 |
|                         | 125 Vdc | 113                 | 0.90                 | N/A               | N/A                             |
|                         | 300 Vdc | 111                 | 0.37                 |                   |                                 |
|                         | 347 Vac | 115                 | 0.33                 | >.9               | <20%                            |
|                         | 480 Vac | 115                 | 0.25                 |                   |                                 |
| IAMLGL8                 | 120 Vac | 154                 | 1.30                 | >.9               | <20%                            |
|                         | 277 Vac | 146                 | 0.56                 |                   |                                 |
|                         | 125 Vdc | 156                 | 1.25                 | N/A               | N/A                             |
|                         | 300 Vdc | 152                 | 0.51                 |                   |                                 |
|                         | 347 Vac | 150                 | 0.43                 | >.9               | <20%                            |
|                         | 480 Vac | 149                 | 0.32                 |                   |                                 |
| <b>High Lumen Model</b> |         |                     |                      |                   |                                 |
| IAMLHL1                 | 120 Vac | 180                 | 1.52                 | >.9               | <20%                            |
|                         | 277 Vac | 176                 | 0.67                 |                   |                                 |
|                         | 125 Vdc | 172                 | 1.38                 | N/A               | N/A                             |
|                         | 300 Vdc | 170                 | 0.57                 |                   |                                 |
|                         | 347 Vac | 179                 | 0.52                 | >.9               | <20%                            |
|                         | 480 Vac | 179                 | 0.39                 |                   |                                 |
| IAMLHL2                 | 120 Vac | 231                 | 1.94                 | >.9               | <20%                            |
|                         | 277 Vac | 231                 | 0.88                 |                   |                                 |
|                         | 125 Vdc | 220                 | 1.76                 | N/A               | N/A                             |
|                         | 300 Vdc | 217                 | 0.72                 |                   |                                 |
|                         | 347 Vac | 219                 | 0.64                 | >.9               | <20%                            |
|                         | 480 Vac | 219                 | 0.47                 |                   |                                 |
| IAMLHL3                 | 120 Vac | 317                 | 2.67                 | >.9               | <20%                            |
|                         | 277 Vac | 303                 | 1.15                 |                   |                                 |
|                         | 125 Vdc | 305                 | 2.44                 | N/A               | N/A                             |
|                         | 300 Vdc | 298                 | 0.99                 |                   |                                 |
|                         | 347 Vac | 299                 | 0.87                 | >.9               | <20%                            |
|                         | 480 Vac | 298                 | 0.63                 |                   |                                 |

Note: Surge Protection: Integral 6 kV surge protection. Option for up to 10 kV surge protection.

① All values are typical (tolerance +/-10%).

# Industrial Areamaster™ Generation 2 and High Lumen LED Series Luminaires

Floodlight


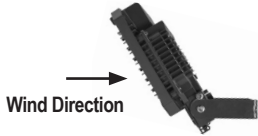


Ordinary Locations

NEC/CEC/NOM: Type 3R, 4, 4X | IP66/67 | Marine outside type (salt water) for USA Only | Wet locations

IECEE CB: IK08 | IP66

Markings: CE | UKCA

Notable: American Bureau of Shipping (ABS) Certified | 10G Vibration – IAMLG, 5G Vibration – IAMLH

| Luminaire Category                |   | Frontal Projected Area (FPA) ft <sup>2</sup> | Drag Coefficient (DC) | Effective Projected Area (EPA) = FPA*DC ft <sup>2</sup> |
|-----------------------------------|---|--|-----------------------|---|
| <b>Low Lumen Model — IAMLG</b>    |   |  |                       |   |
| 90° to Ground-Worst Case Mounting |    | 1.52   | 1.20                  | 1.82  |
| 45° to Ground-Standard Mounting   |    | 1.07   | 1.2                   | 1.28  |
| <b>High Lumen Model — IAMLH</b>   |   |  |                       |   |
| 90° to Ground-Worst Case Mounting |   | 2.04   | 1.20                  | 2.45  |
| 45° to Ground-Standard Mounting   |  | 1.44   | 1.20                  | 1.73  |

# Industrial Areamaster™ Generation 2 and High Lumen LED Series Luminaires

## Floodlight

### Ordinary Locations

NEC/CEC/NOM: Type 3R, 4, 4X | IP66/67 | Marine outside type (salt water) for USA Only | Wet locations  
 IEC/CE CB: IK08 | IP66  
 Markings: CE | UKCA  
 Notable: American Bureau of Shipping (ABS) Certified | 10G Vibration – IANLH, 5G Vibration – IANLH

#### Accessories and Replacement Parts

|                                   | Description   | Weight in kg (lbs) | Catalog Number  |
|-----------------------------------|---|--------------------|-----------------|
| <b>Crossarm Mounting Bracket</b>  |   |                    |                 |
|                                   | Has 180° horizontal adjustment — degree marked. Facilitates mounting floodlight to crossarm or other flat surface, or to GAM8WB. Includes floodlight yoke bolts. Malleable iron, zinc plated, chromate sealed, architectural bronze polyester finish. | 1.4 (3.1)          | <b>GAM8CA</b>   |
| <b>Pipe or Wall Mount Bracket</b> |   |                    |                 |
|                                   | Used with GAM8CA. Clamps to 1" to 2-1/2" pipe, vertical or horizontal, or mounts on flat surfaces. Includes U-bolt and crossarm bracket bolts. Malleable iron, zinc plated, chromate sealed, with architectural bronze polyester finish.              | 2.9 (6.4)          | <b>GAM8WB</b>   |
|                                   | <i>Crossarm Mounting Bracket (GAM8CA) used with Pipe or Wall Mount Bracket (GAM8WB).</i>  |                    |                 |
| <b>Poletop Slip-Fitter</b>        |   |                    |                 |
|                                   | Slip-fits 1" or 1-1/2" pipe size poletop tenons. Includes floodlight yoke bolts, 3 locking bolts, and cord grip. Body is malleable iron-zinc plated, chromate sealed, with cast aluminum cap. Assembly has architectural bronze polyester finish.     | 2.4 (5.3)          | <b>AMLEDSF1</b> |
| <b>Poletop Slip-Fitter</b>        |   |                    |                 |
|                                   | Slip-fits 1-1/2" or 2" pipe size poletop tenons. Includes floodlight yoke bolts, 3 locking bolts, and cord grip. Body is malleable iron-zinc plated, chromate sealed, with cast aluminum cap. Assembly has architectural bronze polyester finish.     | 2.4 (5.3)          | <b>GSF20</b>    |
| <b>Poletop Slip-Fitter</b>        |   |                    |                 |
|                                   | Slip-fits 2" or 2-1/2" poletop tenons. Includes floodlight yoke bolts, 3 locking bolts, and cord grip. Malleable iron, zinc plated, chromate sealed, with architectural bronze polyester finish.  | 2.8 (6.2)          | <b>GAM8SF</b>   |


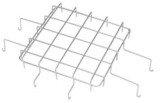





# Industrial Areamaster™ Generation 2 and High Lumen LED Series Luminaires

Floodlight

Ordinary Locations

NEC/CEC/NOM: Type 3R, 4, 4X | IP66/67 | Marine outside type (salt water) for USA Only | Wet locations  
 IEC/CE CB: IK08 | IP66  
 Markings: CE | UKCA  
 Notable: American Bureau of Shipping (ABS) Certified | 10G Vibration – IAMLG, 5G Vibration – IAMLH

## Accessories and Replacement Parts

|  | Description   | Weight in kg (lbs) | Catalog Number |
|--|---|--------------------|----------------|
| <b>Wall Mount Bracket</b>  |   |                    |                |
|             | Used with GAM8SF to provide a wall mounting option. Galvanized Steel.   | 4.8 (10.5)         | GPSWB6GAL      |
| <b>Wire Guard - Stainless Steel</b>  |   |                    |                |
|             | IAMLGL6, IAMLGL7, IAMLGL8   | 0.2 (0.4)          | LGGUARD        |
|  | IAMLHL1, IAMLHL2, IAMLHL3   |                    | LHGUARD        |
| <b>Safety Cable</b>  |   |                    |                |
|             | Stainless steel - 1.22 m (4 ft)   | 0.2 (0.4)          | LEDSC          |
|  | Stainless steel - 2.44 m (8 ft)   | 0.4 (0.8)          | LEDSC8         |
| <b>Visor for Dark Sky Friendly Design - Steel with architectural bronze polyester finish</b> |   |                    |                |
|           | IAMLGL6, IAMLGL7, IAMLGL8   | 0.2 (0.4)          | AMLGV          |
|  | IAMLHL1, IAMLHL2, IAMLHL3   |                    | AMLHV          |
| <b>Portable Floodlight Base</b>  |   |                    |                |
|           | Portable floodlight base for temporary lighting applications. To be used with wire guard. Malleable iron with architectural bronze polyester finish.                  | 2.4 (5.2)          | GAMPFB         |
| <b>Replacement Covers/Lenses</b>   |   |                    |                |
|           | Clear Glass — IAMLGL6, IAMLGL7, IAMLGL8   | 2.2 (4.8)          | AMLGCLEAR      |
|  | Frosted Glass — IAMLGL6, IAMLGL7, IAMLGL8   | 2.0 (4.5)          | AMLGFROST      |
|  | Diffused Polycarbonate — IAMLGL6, IAMLGL7, IAMLGL8  | 1.6 (3.5)          | AMLGDIFFP      |
|  | Clear Glass — IAMLHL1, IAMLHL2, IAMLHL3   | 2.4 (5.3)          | AMLHCLEAR      |
|  | Frosted Glass — IAMLHL1, IAMLHL2, IAMLHL3   | 2.4 (5.3)          | AMLHFROST      |
| <b>Yoke Mount Bracket</b>  |   |                    |                |
|           | Stainless Steel Yoke Mount Bracket. For installations requiring a higher degree of corrosion protection. Made with all stainless steel components, no painted finish. | 1.8 (4.0)          | AMLYMSS        |
|  | Architectural Bronze Replacement Yoke Bracket - Matches mounting hole pattern of Crouse-Hinds™ ± Champ FMVA and Champ Pro PFMA LED series floodlights                 | 1.41 (3.1)         | AMLYMCH        |

± Crouse-Hinds and Champ are registered trademarks of Cooper Industries, Inc., a wholly owned subsidiary of the Eaton Corporation plc.



# Industrial Areamaster™ Generation 2 and High Lumen LED Series Luminaires

Floodlight

Ordinary Locations

NEC/CEC/NOM: Type 3R, 4, 4X | IP66/67 | Marine outside type (salt water) for USA Only | Wet locations  
 IEC/CE CB: IK08 | IP66  
 Markings: CE | UKCA  
 Notable: American Bureau of Shipping (ABS) Certified | 10G Vibration – IAMLG, 5G Vibration – IAMLH

## Replacement Drivers

|   | Model   | Voltage  | Driver Wattage | Constant Current Setting | Catalog Number                     |  |
|---|---|----------|----------------|--------------------------|------------------------------------|--|
| <b>Low Lumen Model - Standard Temperature (-40 °C)</b>                              |   |          |                |                          |                                    |  |
|    | IAMLGL6C, IAMLGL6N,<br>IAMLGL6W, IAMLGL6S,<br>IAMLGL6A  | BU<br>BH | 100 Watt       | 410mA                    | APMS100C105UD41<br>APMS100C105HD41 |  |
|   | IAMLGL7W  | BU<br>BH | 150 Watt       | 650mA                    | APMS150C105UD65<br>APMS150C105HD65 |  |
|   | IAMLGL7C, IAMLGL7N,<br>IAMLGL7S, IAMLGL7A               | BU<br>BH | 150 Watt       | 680mA                    | APMS150C105UD68<br>APMS150C105HD68 |  |
|   | IAMLGL8W  | BU<br>BH | 150 Watt       | 890mA                    | APMS150C105UD89<br>APMS150C105HD89 |  |
|   | IAMLGL8C, IAMLGL8N,<br>IAMLGL8S, IAMLGL8A               | BU<br>BH | 150 Watt       | 930mA                    | APMS150C105UD93<br>APMS150C105HD93 |  |
|   | <b>Cold Temperature (-55 °C)</b>                        |          |                |                          |                                    |  |
|   | IAMLGL6 - all CCTs                                      | BU       | 100 Watt       | 410mA                    | APMZ100C090UD41                    |  |
|   | IAMLGL7 - all CCTs                                      | BU       | 150 Watt       | 680mA                    | APMZ150C135UD68                    |  |
|   | IAMLGL8 - all CCTs                                      | BU       | 150 Watt       | 930mA                    | APMZ150C135UD93                    |  |
|   | <b>High Lumen Model - Standard Temperature (-40 °C)</b> |          |                |                          |                                    |  |
|  | IAMLHL1C, IAMLHL1N,<br>IAMLHL1W, IAMLHL1S,<br>IAMLHL1A  | BU<br>BH | 100 Watt       | 530mA                    | APMS100C105UD53<br>APMS100C105HD53 |  |
|   | IAMLHL2W  | BU<br>BH | 150 Watt       | 650mA                    | APMS150C105UD65<br>APMS150C105HD65 |  |
|   | IAMLHL2C, IAMLHL2N,<br>IAMLHL2S, IAMLHL2A               | BU<br>BH | 150 Watt       | 680mA                    | APMS150C105UD68<br>APMS150C105HD68 |  |
|   | IAMLHL3W  | BU<br>BH | 150 Watt       | 890mA                    | APMS150C105UD89<br>APMS150C105HD89 |  |
|   | IAMLHL3C, IAMLHL3N,<br>IAMLHL3S, IAMLHL3A               | BU<br>BH | 150 Watt       | 915mA                    | APMS150C105UD91<br>APMS150C105HD91 |  |
|   | <b>Cold Temperature (-55 °C)</b>                        |          |                |                          |                                    |  |
|   | IAMLHL1 - all CCTs                                      | BU       | 100 Watt       | 530mA                    | APMZ100C090UD53                    |  |
|   | IAMLHL2 - all CCTs                                      | BU       | 150 Watt       | 680mA                    | APMZ150C135UD68                    |  |
|   | IAMLHL3 - all CCTs                                      | BU       | 150 Watt       | 915mA                    | APMZ150C135UD93                    |  |

## Luminaire Weights

| Description   | Weight in kg (lbs) |
|---|--------------------|
| Low Lumen Model — IAMLGL6, IAMLGL7, IAMLGL8 Luminaires  | 9.8 (21.6)         |
| High Lumen Model — IAMLHL1, IAMLHL2, IAMLHL3 Luminaires | 16.1 (35.4)        |

# Industrial Areamaster™ Generation 2 and High Lumen LED Series Luminaires

## Floodlight

### Ordinary Locations

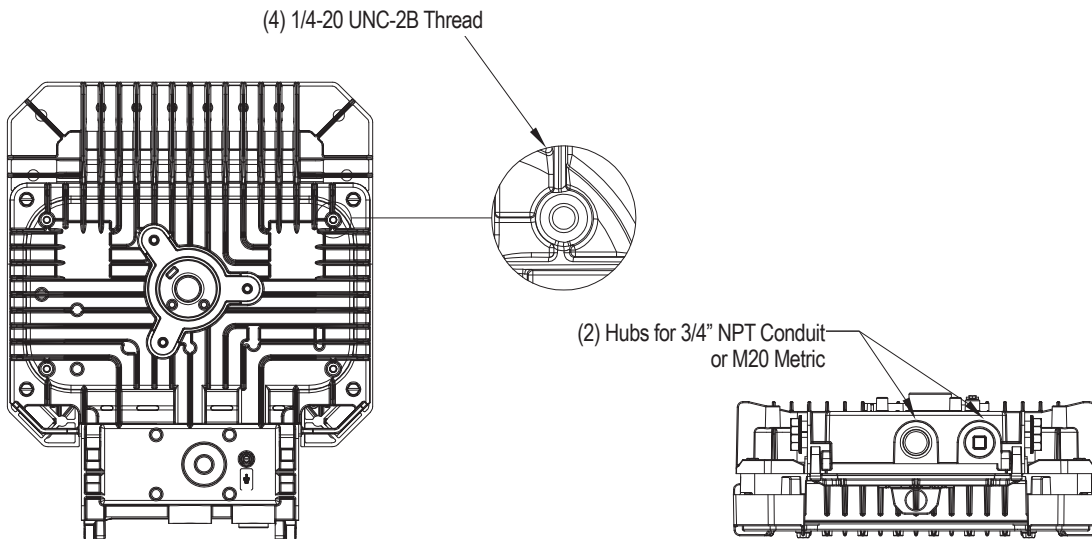
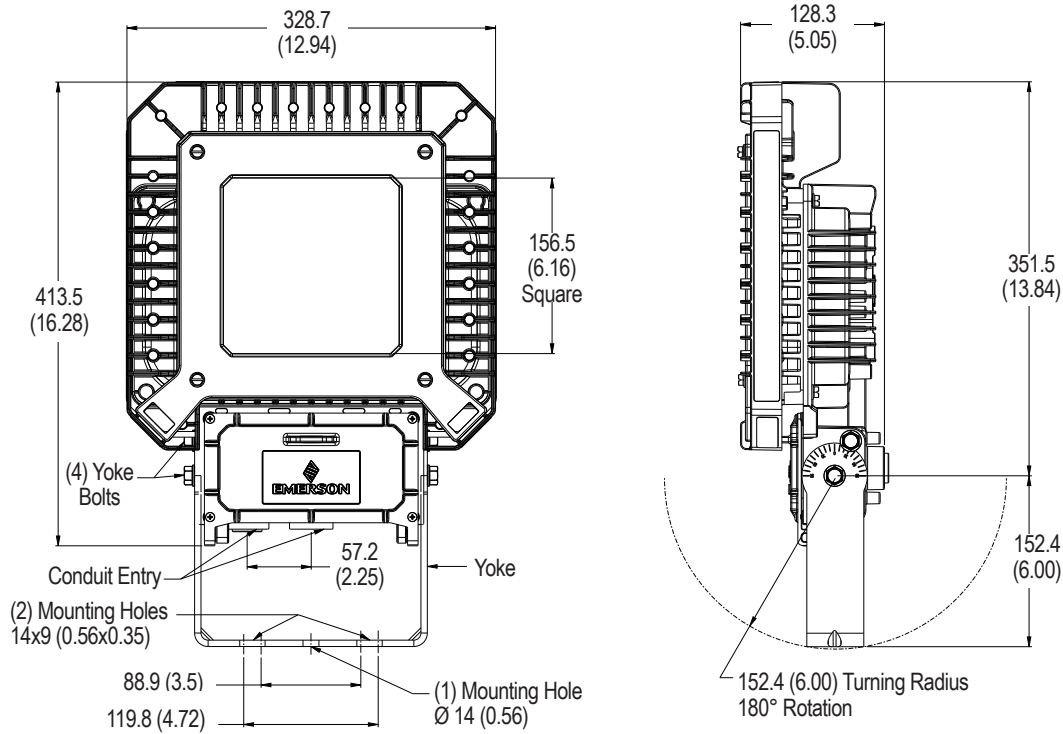
NEC/CEC/NOM: Type 3R, 4, 4X | IP66/67 | Marine outside type (salt water) for USA Only | Wet locations

IECEE CB: IK08 | IP66

Markings: CE | UKCA

Notable: American Bureau of Shipping (ABS) Certified | 10G Vibration – IANGLG, 5G Vibration – IANLH

#### IANGLG Dimensions in Millimeters (Inches) — Floodlight — Low Lumen Model

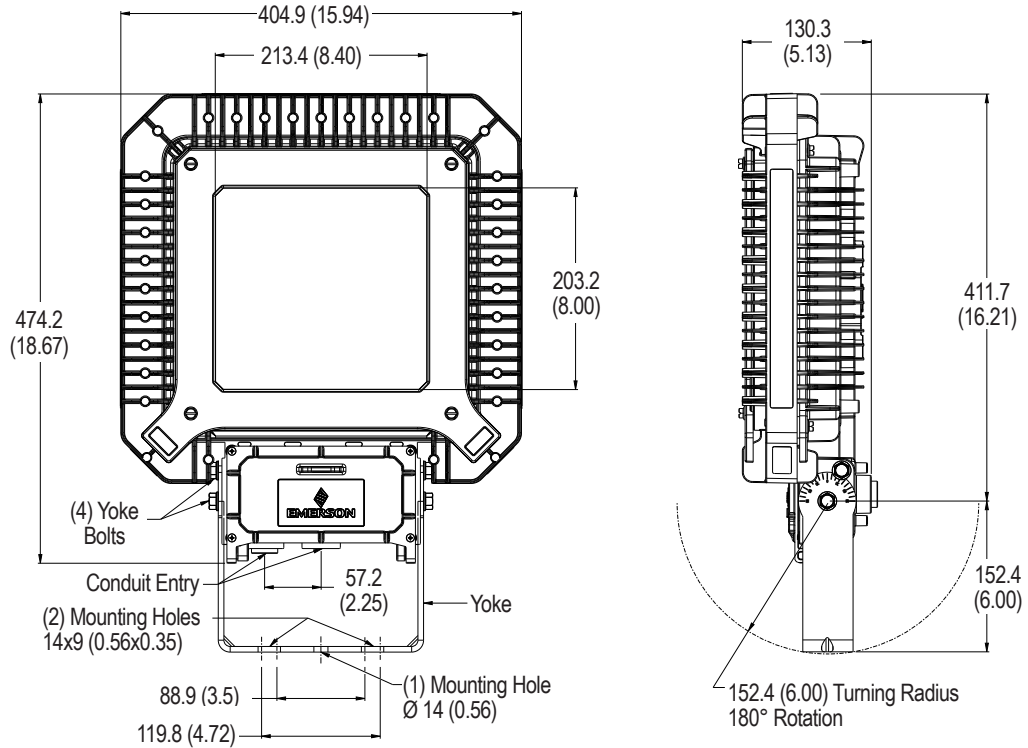


# Industrial Areamaster™ Generation 2 and High Lumen LED Series Luminaires

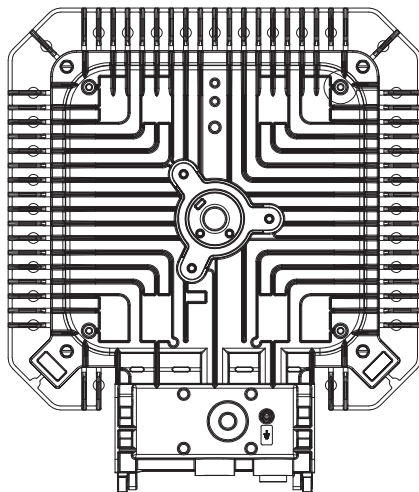
Floodlight  
Ordinary Locations

NEC/CEC/NOM: Type 3R, 4, 4X | IP66/67 | Marine outside type (salt water) for USA Only | Wet locations  
IECEE CB: IK08 | IP66  
Markings: CE | UKCA  
Notable: American Bureau of Shipping (ABS) Certified | 10G Vibration – IANLH, 5G Vibration – IANLH

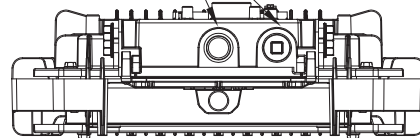
## IANLH Dimensions in Millimeters (Inches) — Floodlight — High Lumen Model



(4) 1/4-20 UNC-2B Thread



(2) Hubs for 3/4" NPT Conduit or M20 Metric



# Industrial Areamaster™ Generation 2 and High Lumen LED Series Luminaires

Floodlight

Ordinary Locations

NEC/CEC/NOM: Type 3R, 4, 4X | IP66/67 | Marine outside type (salt water) for USA Only | Wet locations

IECEE CB: IK08 | IP66

Markings: CE | UKCA

Notable: American Bureau of Shipping (ABS) Certified | 10G Vibration – IANGLG, 5G Vibration – IANLH

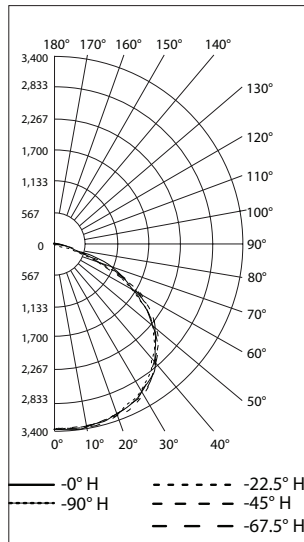
## Photometric Data — DATA SHOWN IS ABSOLUTE

### NEMA 7x7, Clear Glass, 5000K CCT

REPORT NUMBER : IAMLGL6CG6BU

Luminaire Lumens : 9,964 lumens

#### POLAR CANDELA DISTRIBUTION

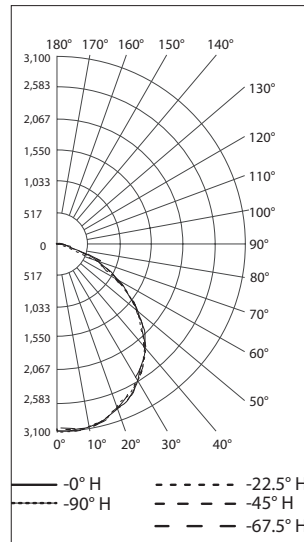


### NEMA 7x7, Frosted Glass, 5000K CCT

REPORT NUMBER : IAMLGL6CF6BU

Luminaire Lumens : 8,115 lumens

#### POLAR CANDELA DISTRIBUTION

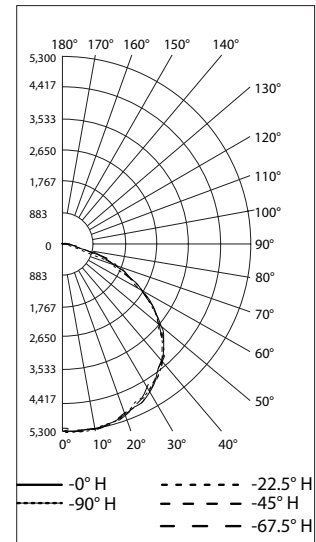


### NEMA 7x7, Clear Glass, 5000K CCT

REPORT NUMBER : IAMLGL7CG6BU

Luminaire Lumens : 15,320 lumens

#### POLAR CANDELA DISTRIBUTION

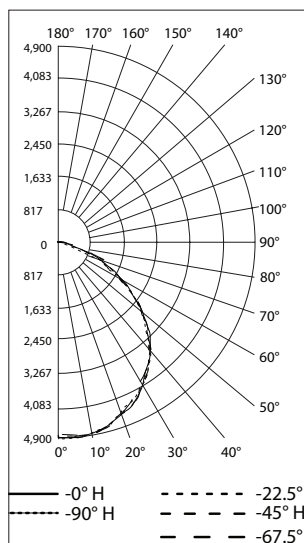


### NEMA 7x7, Frosted Glass, 5000K CCT

REPORT NUMBER : IAMLGL7CF6BU

Luminaire Lumens : 12,782 lumens

#### POLAR CANDELA DISTRIBUTION

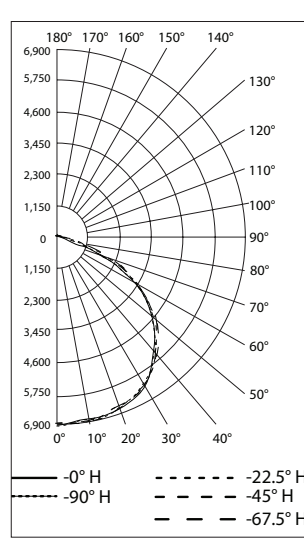


### NEMA 7x7, Clear Glass, 5000K CCT

REPORT NUMBER : IAMLGL8CG6BU

Luminaire Lumens : 19,895 lumens

#### POLAR CANDELA DISTRIBUTION

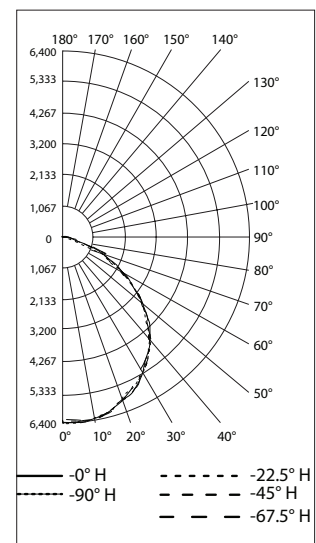


### NEMA 7x7, Frosted Glass, 5000K CCT

REPORT NUMBER : IAMLGL8CF6BU

Luminaire Lumens : 16,503 lumens

#### POLAR CANDELA DISTRIBUTION





# Industrial Areamaster™ Generation 2 and High Lumen LED Series Luminaires

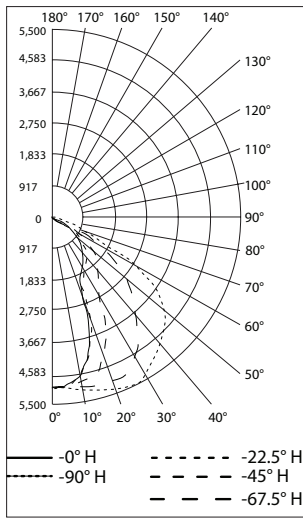
Floodlight  
Ordinary Locations

NEC/CEC/NOM: Type 3R, 4, 4X | IP66/67 | Marine outside type (salt water) for USA Only | Wet locations  
IECEE CB: IK08 | IP66  
Markings: CE | UKCA  
Notable: American Bureau of Shipping (ABS) Certified | 10G Vibration – IANL, 5G Vibration – IANLH

## Photometric Data — DATA SHOWN IS ABSOLUTE

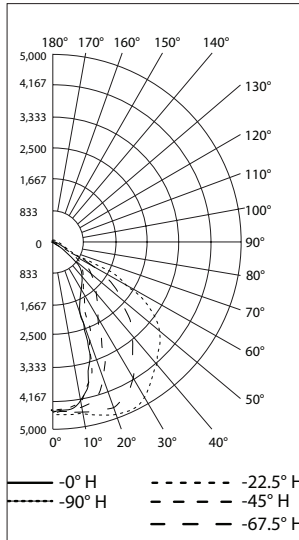
**NEMA 7x6, Clear Glass, 5000K CCT**  
REPORT NUMBER : **IAMLGL6CG7BU**  
Luminaire Lumens : 9,086 lumens

**POLAR CANDELA DISTRIBUTION**



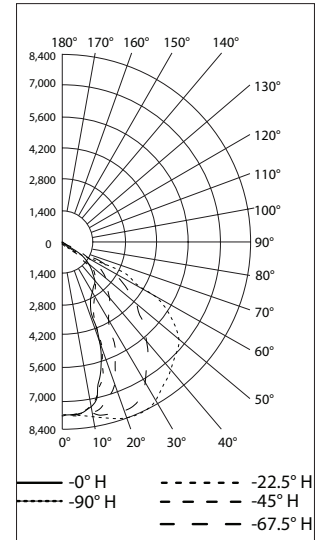
**NEMA 7x6, Clear Glass, 3000K CCT**  
REPORT NUMBER : **IAMLGL6WG7BU**  
Luminaire Lumens : 8,111 lumens

**POLAR CANDELA DISTRIBUTION**



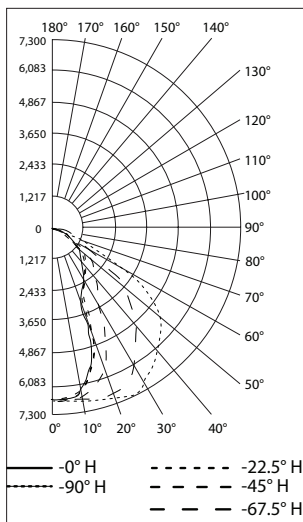
**NEMA 7x6, Clear Glass, 5000K CCT**  
REPORT NUMBER : **IAMLGL7CG7BU**  
Luminaire Lumens : 14,205 lumens

**POLAR CANDELA DISTRIBUTION**



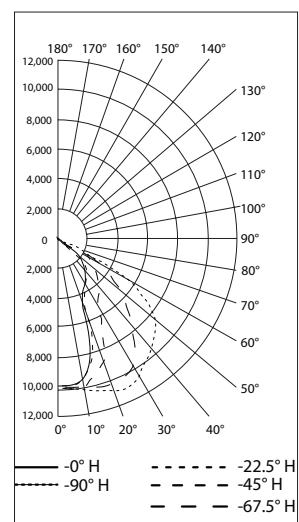
**NEMA 7x6, Clear Glass, 3000K CCT**  
REPORT NUMBER : **IAMLGL7WG7BU**  
Luminaire Lumens : 11,971 lumens

**POLAR CANDELA DISTRIBUTION**



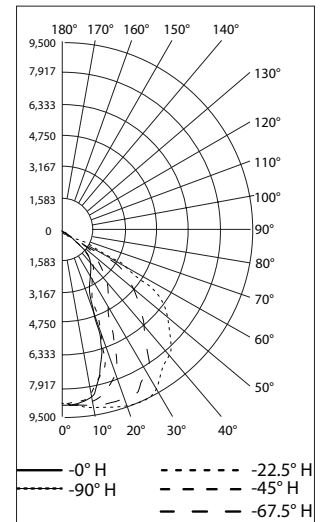
**NEMA 7x6, Clear Glass, 5000K CCT**  
REPORT NUMBER : **IAMLGL8CG7BU**  
Luminaire Lumens : 18,467 lumens

**POLAR CANDELA DISTRIBUTION**



**NEMA 7x6, Clear Glass, 3000K CCT**  
REPORT NUMBER : **IAMLGL8WG7BU**  
Luminaire Lumens : 15,556 lumens

**POLAR CANDELA DISTRIBUTION**



# Industrial Areamaster™ Generation 2 and High Lumen LED Series Luminaires

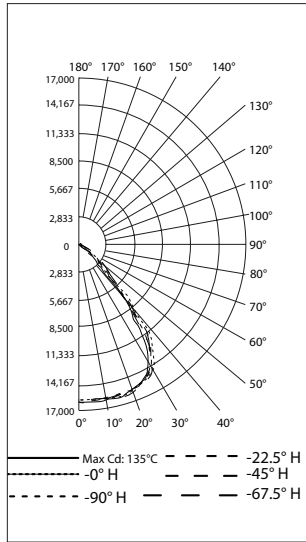
Floodlight  
Ordinary Locations

NEC/CEC/NOM: Type 3R, 4, 4X | IP66/67 | Marine outside type (salt water) for USA Only | Wet locations  
IECEE CB: IK08 | IP66  
Markings: CE | UKCA  
Notable: American Bureau of Shipping (ABS) Certified | 10G Vibration – IANGLG, 5G Vibration – IANLH

## Photometric Data — DATA SHOWN IS ABSOLUTE

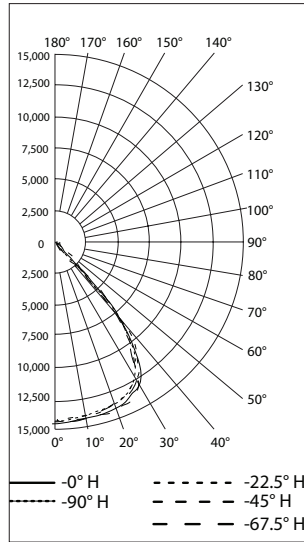
**NEMA 5x5, Clear Glass, 5000K CCT**  
REPORT NUMBER : **IAMLHL1CG5BU**  
Luminaire Lumens : 24,140 lumens

**POLAR CANDELA DISTRIBUTION**



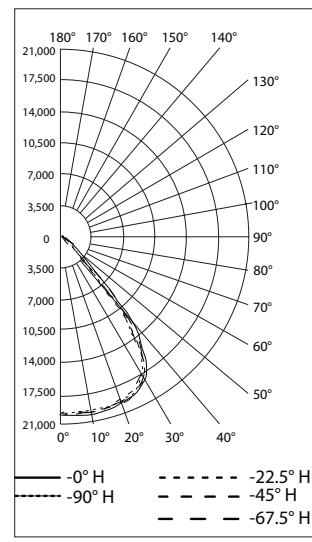
**NEMA 5x5, Clear Glass, 3000K CCT**  
REPORT NUMBER : **IAMLHL1WG5BU**  
Luminaire Lumens : 21,416 lumens

**POLAR CANDELA DISTRIBUTION**



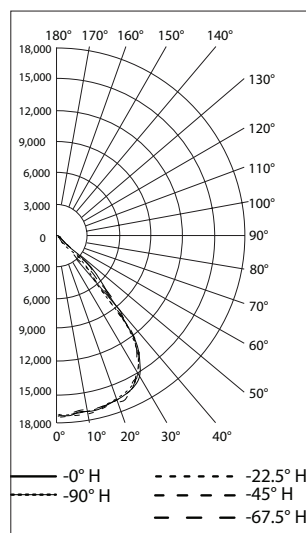
**NEMA 5x5, Clear Glass, 5000K CCT**  
REPORT NUMBER : **IAMLHL2CG5BU**  
Luminaire Lumens : 30,068 lumens

**POLAR CANDELA DISTRIBUTION**



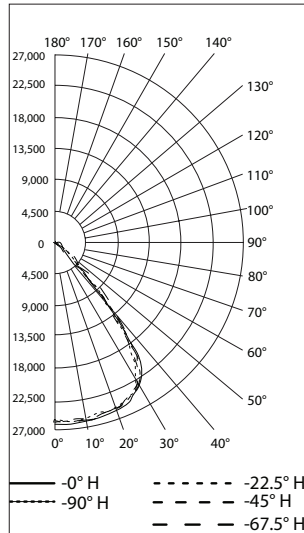
**NEMA 5x5, Clear Glass, 3000K CCT**  
REPORT NUMBER : **IAMLHL2WG5BU**  
Luminaire Lumens : 25,490

**POLAR CANDELA DISTRIBUTION**



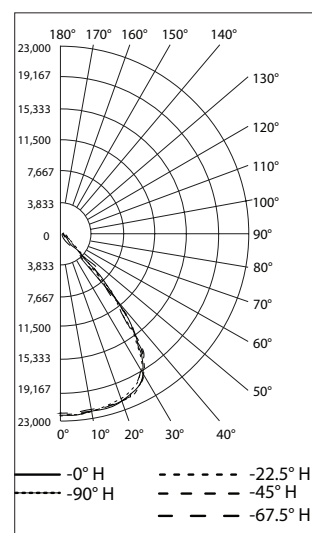
**NEMA 5x5, Clear Glass, 5000K CCT**  
REPORT NUMBER : **IAMLHL3CG5BU**  
Luminaire Lumens : 38,350 lumens

**POLAR CANDELA DISTRIBUTION**



**NEMA 5x5, Clear Glass, 3000K CCT**  
REPORT NUMBER : **IAMLHL3WG5BU**  
Luminaire Lumens : 32,835 lumens

**POLAR CANDELA DISTRIBUTION**



# Industrial Areamaster™ Generation 2 and High Lumen LED Series Luminaires

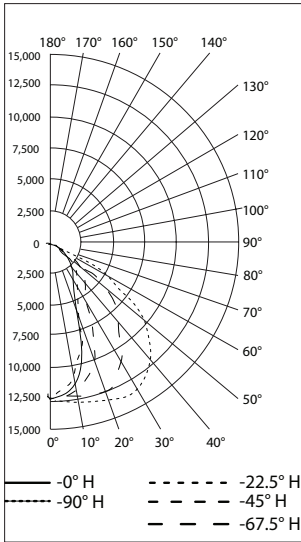
Floodlight  
Ordinary Locations

NEC/CEC/NOM: Type 3R, 4, 4X | IP66/67 | Marine outside type (salt water) for USA Only | Wet locations  
IECEE CB: IK08 | IP66  
Markings: CE | UKCA  
Notable: American Bureau of Shipping (ABS) Certified | 10G Vibration – IANL, 5G Vibration – IANLH

## Photometric Data — DATA SHOWN IS ABSOLUTE

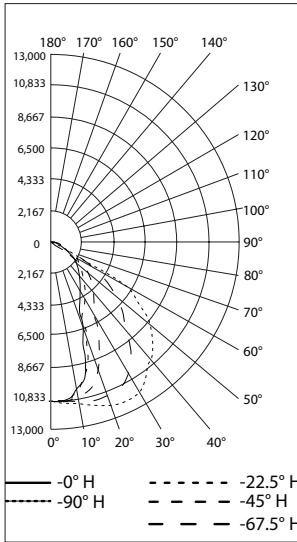
**NEMA 7x6, Clear Glass, 5000K CCT**  
REPORT NUMBER : **IAMLHL1CG7BU**  
Luminaire Lumens : 22,661 lumens

POLAR CANDELA DISTRIBUTION



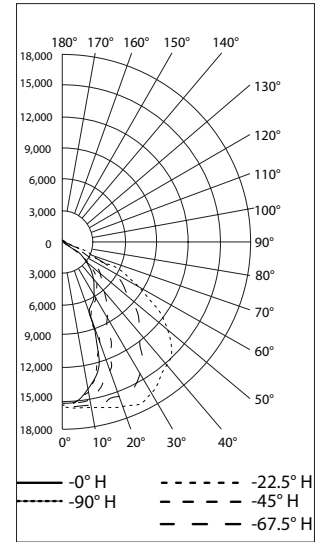
**NEMA 7x6, Clear Glass, 3000K CCT**  
REPORT NUMBER : **IAMLHL1WG7BU**  
Luminaire Lumens : 19,753

POLAR CANDELA DISTRIBUTION



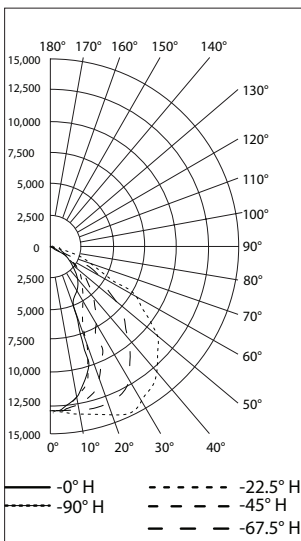
**NEMA 7x6, Clear Glass, 5000K CCT**  
REPORT NUMBER : **IAMLHL2CG7BU**  
Luminaire Lumens : 28,063 lumens

POLAR CANDELA DISTRIBUTION



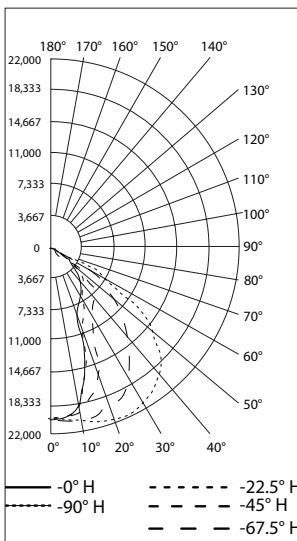
**NEMA 7x6, Clear Glass, 3000K CCT**  
REPORT NUMBER : **IAMLHL2WG7BU**  
Luminaire Lumens : 23,532 lumens

POLAR CANDELA DISTRIBUTION



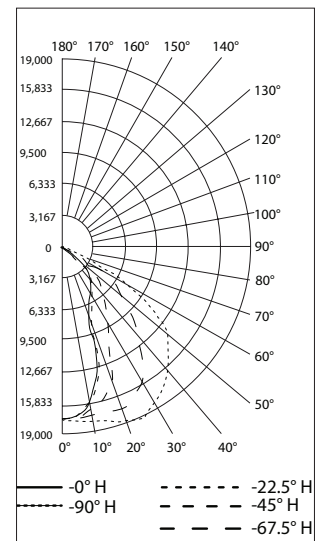
**NEMA 7x6, Clear Glass, 5000K CCT**  
REPORT NUMBER : **IAMLHL3CG7BU**  
Luminaire Lumens : 35,430 lumens

POLAR CANDELA DISTRIBUTION



**NEMA 7x6, Clear Glass, 3000K CCT**  
REPORT NUMBER : **IAMLHL3WG7BU**  
Luminaire Lumens : 30,346 lumens

POLAR CANDELA DISTRIBUTION



# Industrial Areamaster™ Generation 2 and High Lumen LED Series Luminaires

Floodlight

Ordinary Locations

NEC/CEC/NOM: Type 3R, 4, 4X | IP66/67 | Marine outside type (salt water) for USA Only | Wet locations  
 IEC/CE CB: IK08 | IP66  
 Markings: CE | UKCA  
 Notable: American Bureau of Shipping (ABS) Certified | 10G Vibration – IANGLG, 5G Vibration – IANLH

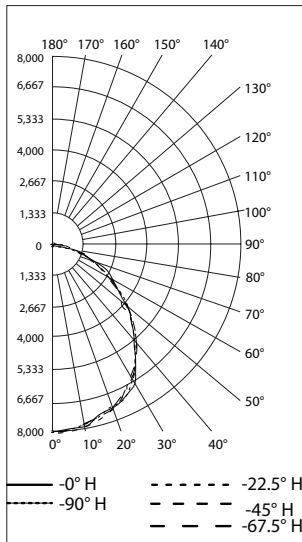
## Photometric Data — DATA SHOWN IS ABSOLUTE

### NEMA 7x7, Frosted Glass, 5000K CCT

REPORT NUMBER : IAMLHL1CF6BU

Luminaire Lumens : 20,578 lumens

#### POLAR CANDELA DISTRIBUTION

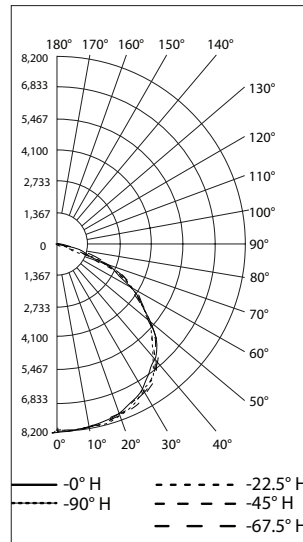


### NEMA 7x7, Clear Glass, 5000K CCT

REPORT NUMBER : IAMLHL1CG6BU

Luminaire Lumens : 23,457 lumens

#### POLAR CANDELA DISTRIBUTION

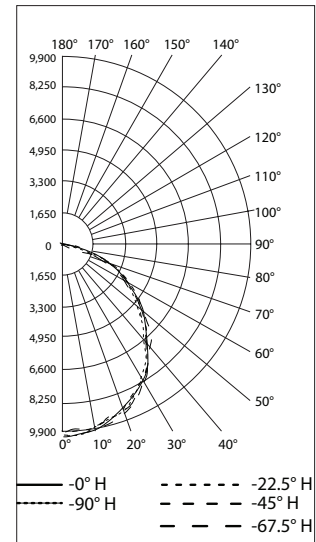


### NEMA 7x7, Frosted Glass, 5000K CCT

REPORT NUMBER : IAMLHL2CF6BU

Luminaire Lumens : 25,616 lumens

#### POLAR CANDELA DISTRIBUTION

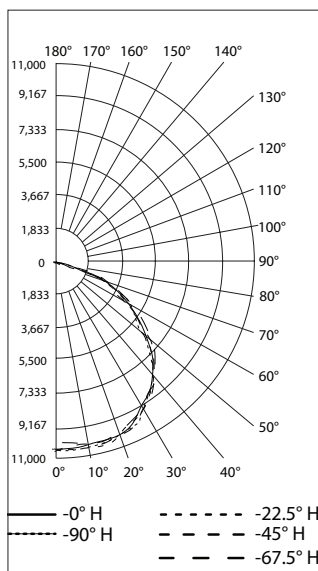


### NEMA 7x7, Clear Glass, 5000K CCT

REPORT NUMBER : IAMLHL2CG6BU

Luminaire Lumens : 30,157 lumens

#### POLAR CANDELA DISTRIBUTION

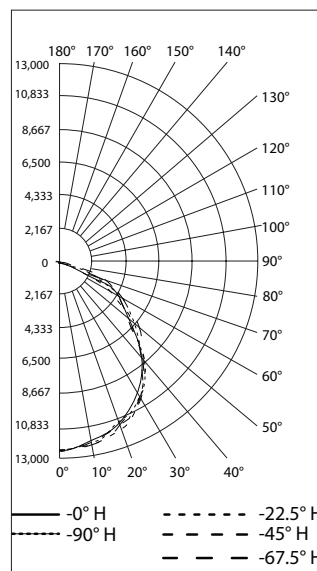


### NEMA 7x7, Frosted Glass, 5000K CCT

REPORT NUMBER : IAMLHL3CF6BU

Luminaire Lumens : 31,600 lumens

#### POLAR CANDELA DISTRIBUTION



### NEMA 7x7, Clear Glass, 5000K CCT

REPORT NUMBER : IAMLHL3CG6BU

Luminaire Lumens : 37,039 lumens

#### POLAR CANDELA DISTRIBUTION

