

GUA Conduit Outlet Boxes

Explosionproof, Dust-Ignitionproof

NEC/CEC:

Class I, Division 1 and 2, Groups B♦, C, D
Class II, Division 1 and 2, Groups E, F, G
Class III
NEMA 3, 4

Applications

- To provide access to conductors for pulling, splicing, maintenance and future changes and upgrades.
- Allows connection of straight conduit runs, branch conduit runs and 90° bends.

Features

- O-ring gasket provided to assure NEMA 4 rating.
- Internal ground screw.
- Smooth hub bushings protect insulation when pulling conductors.
- Cast-in brackets on cover for use with breaker-bar tools for tightening/loosening.
- Tapered threaded hubs (NPT).
- Threaded for rigid conduit or IMC.

Standard Materials

- 1/2" thru 1" Body: malleable iron
- 1/2" thru 1" Cover: copperfree (4/10 of 1% max.) aluminum
- 1/2" thru 2" Body and cover: malleable iron

Standard Finishes

- Malleable iron bodies and covers: triple-coat — (1) zinc electroplate, (2) chromate, and (3) epoxy powder coat
- Aluminum bodies and covers: epoxy powder coat

NEC/CEC Certifications and Compliances

- UL Standard: 886
- UL Listed: E-85310
- CSA Standard: C22.2 No. 30
- CSA Certified: 164465
- NEMA 7BCD, 9EFG
- NEC Articles 500-503 and 505









♦ In Class I, Division 1, Group B atmospheres, all conduit runs must have a sealing fitting (not supplied) field-installed within 2" to the enclosure.

GUA Conduit Outlet Boxes

Explosionproof, Dust-Ignitionproof

NEC/CEC:
 Class I, Division 1 and 2, Groups B♦, C, D
 Class II, Division 1 and 2, Groups E, F, G
 Class III
 NEMA 3, 4

						Catalog Number	
	Hub Type	Trade Size (Inches)	Form	Malleable Iron Body With Aluminum Cover	Malleable Iron Body and Cover		
	GUAE	1/2	1	GUAE-50	GUAE-50MC		
		3/4	1	GUAE-75	GUAE-75MC		
		1	1	GUAE-100	GUAE-100MC		
	GUAC	1/2	1	GUAC-50	GUAC-50MC		
		3/4	1	GUAC-75	GUAC-75MC		
		1	1	GUAC-100	GUAC-100MC		
		1-1/4	2	—	GUAC-125		
		1-1/2	3	—	GUAC-150		
2	3	—	GUAC-200				
	GUAL	1/2	1	GUAL-50	GUAL-50MC		
		3/4	1	GUAL-75	GUAL-75MC		
		1	1	GUAL-100	GUAL-100MC		
		1-1/4	2	—	GUAL-125		
		1-1/2	3	—	GUAL-150		
2	3	—	GUAL-200				
	GUALB	1/2	1	GUALB-50	GUALB-50MC		
		3/4	1	GUALB-75	GUALB-75MC		
		1	1	GUALB-100	GUALB-100MC		
		1-1/4	2	—	GUALB-125		
		1-1/2	3	—	GUALB-150		
2	3	—	GUALB-200				
	GUAT	1/2	1	GUAT-50	GUAT-50MC		
		3/4	1	GUAT-75	GUAT-75MC		
		1	1	GUAT-100	GUAT-100MC		
		1-1/4	2	—	GUAT-125		
		1-1/2	3	—	GUAT-150		
2	3	—	GUAT-200				
	GUAX	1/2	1	GUAX-50	GUAX-50MC		
		3/4	1	GUAX-75	GUAX-75MC		
		1	1	GUAX-100	GUAX-100MC		
		1-1/4	2	—	GUAX-125		
		1-1/2	3	—	GUAX-150		
2	3	—	GUAX-200				

♦ In Class I, Division 1, Group B atmospheres, all conduit runs must have a sealing fitting (not supplied) field-installed within 2" to the enclosure.

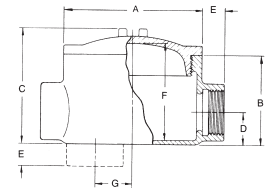
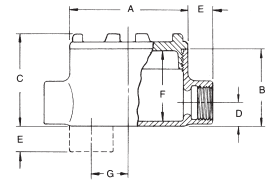
GUA Conduit Outlet Boxes

Explosionproof, Dust-Ignitionproof

NEC/CEC:
 Class I, Division 1 and 2, Groups B♦, C, D
 Class II, Division 1 and 2, Groups E, F, G
 Class III
 NEMA 3, 4

Dimensions in Millimeters (Inches)

Hub Size (Inches)	Dimensions in Millimeters (Inches)						
	A	B	C	D	E	F	G
Type GUA, Form 1							
1/2	95.3 (3.75)	62.0 (2.44)	73.2 (2.88)	19.1 (0.75)	20.6 (0.81)	57.2 (2.25)	31.8 (1.25)
3/4	95.3 (3.75)	62.0 (2.44)	73.2 (2.88)	19.1 (0.75)	20.6 (0.81)	57.2 (2.25)	31.8 (1.25)
1	95.3 (3.75)	62.0 (2.44)	73.2 (2.88)	19.1 (0.75)	20.6 (0.81)	57.2 (2.25)	31.8 (1.25)
Type GUA, Form 2							
1-1/4	114.3 (4.50)	68.3 (2.69)	90.4 (3.56)	30.2 (1.19)	22.4 (0.88)	69.9 (2.75)	28.7 (1.13)
Type GUA, Form 3							
1-1/2	146.1 (5.75)	95.3 (3.75)	122.2 (4.81)	35.1 (1.38)	23.9 (0.94)	103.1 (4.06)	38.1 (1.50)
2	146.1 (5.75)	101.6 (4.00)	128.5 (5.06)	41.4 (1.63)	25.4 (1.00)	108.0 (4.25)	31.8 (1.25)



♦ In Class I, Division 1, Group B atmospheres, all conduit runs must have a sealing fitting (not supplied) field-installed within 2" to the enclosure.