

AE Series Pin and Sleeve Plugs, Connectors and Receptacles

Weatherproof

600 Vac, 250 Vdc. Pressure Wire Terminals.

NEC:

Rated for Ordinary (Unclassified) Locations

PLUGS AND RECEPTACLES: NEC/CEC ORDINARY LOCATION

APPLETON™

Applications

- Designed to supply power to portable or fixed electrical equipment such as:
 - Welders
 - Generators
 - Compressors
 - Pumps
 - Similar apparatus
- Suitable for use in locations where a weatherproof enclosure is required such as:
 - Shipping docks
 - Ports
 - Ship to shore applications

Features

- Available in 30, 60, and 100 Amp units.
- Contacts exert constant pressure along the entire contact surface, providing electrical continuity. Solid brass contacts with beryllium copper springs.
- Choice of receptacle types: weatherproof spring door or raintight screw cap.
- Plug with clamp ring has neoprene gasket. Ring threads onto screw cap receptacle to provide raintight assembly when properly tightened.
- Cable clamps prevent strain on cables and allow easy cable replacement.
- Mounting box gasket protects receptacle from moisture.
- Insulating blocks provide high degree of dielectric and mechanical strength and lowest moisture absorption, lowest arc tracking.
- Choice of several mounting boxes permits different types of installations.
- Floating-type plug contacts self-align to receptacle contacts.
- Available in two grounding styles: Style 1 (shell only) and Style 2 (shell and extra pole).
- Grounding detent springs in Style 1 and Style 2.
- Grounding strap provided in Style 2 permits extra pole grounding.
- Longer ground contact in Style 2 "makes first and breaks last."

Standard Materials

- Plug, connector, receptacle and mounting box housings: copperfree (4/10 of 1% max.) aluminum
- Insulation blocks: fiber glass reinforced phenolic
- Contacts: brass

Standard Finishes

- Aluminum plug, receptacle, connector, and mounting box housings: epoxy powder coat
- Insulating blocks and contacts: natural finish

Options

- Reverse Service: useful where a "hot" plug feeds a dead receptacle. Reverse service is often used for generator applications where the receptacle houses a dead plug interior. Plug houses an energized receptacle interior, which has recessed male contacts to reduce danger of accidental touching. Suffix **-RS** to receptacle or connector.

NEC Compliances

- UL Standard: UL 1682



AE Series 30 Amp Pin and Sleeve Receptacles Connectors and Plugs

Weatherproof

600 Vac, 250 Vdc. Pressure Wire Terminals. Wire Size Range: #14—#8

NEC:
Rated for Ordinary (Unclassified) Locations



Grounding Style	Wire/Pole	Spring Door Receptacle Only	Screw Cap Receptacle Only	Connector Body Only	Clamping Ring Plug	Plug Cable Dia. (Inches)
Style 1 (Shell Only)	2W, 2P	AE321	AE327	APR3251	AEP3251	.625 to .750
	3W, 3P	AE331	AE337	APR3351	AEP3351	.625 to .750
	4W, 4P	AE341	AE347	APR3451	AEP3451	.625 to .750
Style 2 (Shell and Extra Pole)	2W, 3P	AE332	AE338	APR3361	AEP3361	.625 to .750
	3W, 4P	AE342	AE348	APR3461	AEP3461	.625 to .750

AE Series Mounting Boxes



Hub Size (Inches)	AEE	AERH	AERC	AERA
1/2	AEE13	AERH13	AERC13	AERA13
3/4	AEE23	AERH23	AERC23	AERA23
1	AEE33	AERH33	AERC33	AERA33

30 Amp Interiors ①



Grounding Style	Wire/Pole	Interior Style 1		Interior Style 2	
		Receptacle	Plug	Receptacle	Plug
Style 1 (Shell Only)	2W, 2P	AEI-321	AEPI-321	—	—
	3W, 3P	AEI-331	AEPI-331	—	—
	4W, 4P	AEI-341	AEPI-341	—	—
Style 2 (Shell and Extra Pole)	2W, 3P	—	—	AEI-332	AEPI-332
	3W, 4P	—	—	AEI-342	AEPI-342

① Pins and sleeves are not sold separately. Must purchase as a replacement interior.

AE Series 60 Amp Pin and Sleeve Receptacles Connectors and Plugs

Weatherproof

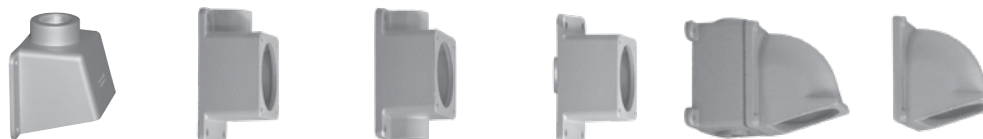
600 Vac, 250 Vdc. Pressure Wire Terminals. Wire Size Range: #8—#4

NEC:
Rated for Ordinary (Unclassified) Locations



Grounding Style	Wire/Pole	Spring Door Receptacle Only	Screw Cap Receptacle Only	Connector Body Only	Clamping Ring Plug	Plug Cable Dia. (Inches)
Style 1 (Shell Only)	2W, 2P	AE621	AE627	APR6252	AEP6252	1.000 to 1.312
	3W, 3P	AE631	AE637	APR6352	AEP6352	1.000 to 1.312
	4W, 4P	AE641	AE647	APR6452	AEP6452	1.000 to 1.312
Style 2 (Shell and Extra Pole)	2W, 3P	AE632	AE638	APR6362	AEP6362	1.000 to 1.312
	3W, 4P	AE642	AE648	APR6462	AEP6462	1.000 to 1.312

AE Series Mounting Boxes



Hub Size (Inches)	AEE	AERH	AERC	AERA	AJA ①	AJA Adapter
1	AEE36	AERH36	AERC36	AERA36	AJA310	AJA100
1-1/4	AEE46	AERH46	AERC46	AERA46	AJA410	AJA100
1-1/2	AEE56	AERH56	AERC56	AERA56	AJA510	AJA100
2	—	—	—	—	AJA610	AJA100

60 Amp Interiors ②



Grounding Style	Wire/Pole	Interior Style 1		Interior Style 2	
		Receptacle	Plug	Receptacle	Plug
Style 1 (Shell Only)	2W, 2P	AEI-621	AEPI-621	—	—
	3W, 3P	AEI-631	AEPI-631	—	—
	4W, 4P	AEI-641	AEPI-641	—	—
Style 2 (Shell and Extra Pole)	2W, 3P	—	—	AEI-632	AEPI-632
	3W, 4P	—	—	AEI-642	AEPI-642

① AJA Feed Thru box furnished with one close-up plug in bottom recessed hub.
② Pins and sleeves are not sold separately. Must purchase as a replacement interior.

AE Series 100 Amp Pin and Sleeve Receptacles Connectors and Plugs

Weatherproof

600 Vac, 250 Vdc. Pressure Wire Terminals. Wire Size Range: #3—#1

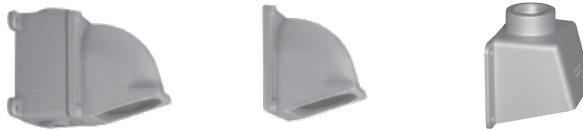
NEC:

Rated for Ordinary (Unclassified) Locations



Grounding Style	Wire/Pole	Spring Door Receptacle Only	Screw Cap Receptacle Only	Connector Body Only	Clamping Ring Plug	Plug Cable Dia. (Inches)
Style 1 (Shell Only)	2W, 2P	AE1021	AE1027	APR10253	AEP10253	.875, 1.437 to 1.750
	3W, 3P	AE1031	AE1037	APR10353	AEP10353	.875, 1.437 to 1.750
	4W, 4P	AE1041	AE1047	APR10453	AEP10453	.875, 1.437 to 1.750
Style 2 (Shell and Extra Pole)	2W, 3P	AE1032	AE1038	APR10363	AEP10363	.875, 1.437 to 1.750
	3W, 4P	AE1042	AE1048	APR10463	AEP10463	.875, 1.437 to 1.750

AE Series Mounting Boxes



Hub Size (Inches)	AJA ①	AJA Adapter	AEE
1	AJA310	AJA100	AEE36
1-1/4	AJA410	AJA100	AEE46
1-1/2	AJA510	AJA100	AEE56
2	AJA610	AJA100	—

100 Amp Interiors ②



Grounding Style	Wire/Pole	Interiors Style 1		Interiors Style 2	
		Receptacle	Plug	Receptacle	Plug
Style 1 (Shell Only)	2W, 2P	AEI-1021	AEPI-1021	—	—
	3W, 3P	AEI-1031	AEPI-1031	—	—
	4W, 4P	AEI-1041	AEPI-1041	—	—
Style 2 (Shell and Extra Pole)	2W, 3P	—	—	AEI-1032	AEPI-1032
	3W, 4P	—	—	AEI-1042	AEPI-1042

① AJA Feed Thru box furnished with one close-up plug in bottom recessed hub.

② Pins and sleeves are not sold separately. Must purchase as a replacement interior.

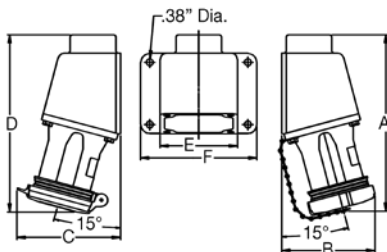
AE Series 30, 60, and 100 Amp Receptacle

Pin and Sleeve Plugs, Connectors and Receptacles

NEC:
Rated for Ordinary (Unclassified) Locations

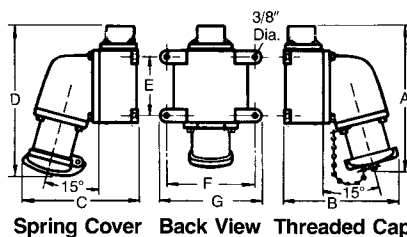
Dimensions in Millimeters (Inches)

Receptacle Mounted on AEE Box



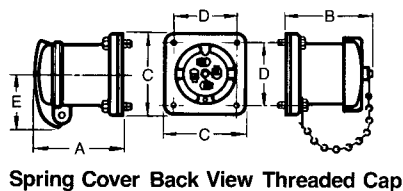
Amp	Dimensions in Millimeters (Inches)					
	A	B	C	D	E	F
30	174.7 (6.88)	87.6 (3.45)	100.3 (3.95)	181.1 (7.13)	107.9 (4.25)	127.0 (5.00)
60	247.6 (9.75)	120.1 (4.73)	126.4 (4.98)	254.0 (10.00)	136.6 (5.38)	162.0 (6.38)

Receptacle Mounted on AJA-AJAC Box



Amp	Dimensions in Millimeters (Inches)						
	A	B	C	D	E	F	G
60	225.5 (8.88)	215.9 (8.50)	215.9 (8.50)	273.0 (10.75)	123.9 (4.88)	174.7 (6.88)	200.1 (7.88)
100	241.3 (9.50)	231.9 (9.13)	238.2 (9.38)	290.5 (11.44)	123.9 (4.88)	174.7 (6.88)	200.1 (7.88)

AE Receptacle



Amp	Dimensions in Millimeters (Inches)				
	A	B	C	D	E
30	90.4 (3.56)	87.3 (3.44)	85.9 (3.38)	69.0 (2.72)	55.6 (2.19)
60	115.8 (4.56)	111.2 (4.38)	114.3 (4.25)	88.9 (3.50)	68.3 (2.69)
100	136.6 (5.38)	131.8 (5.19)	114.3 (4.25)	88.9 (3.50)	71.3 (2.81)

PLUGS AND RECEPTACLES: NEC/CEC ORDINARY LOCATION

APPLETON™

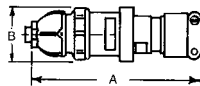
AE Series 30, 60, and 100 Amp Connector, Plug and Mounting Box

Pin and Sleeve Plugs, Connectors and Receptacles

NEC:
Rated for Ordinary (Unclassified) Locations

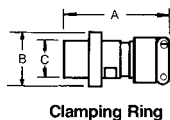
Dimensions in Millimeters (Inches)

APC Cable Connector



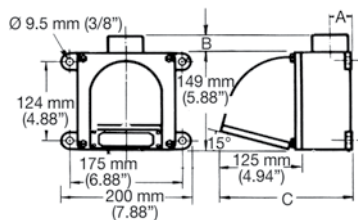
Amp	Dimensions in Millimeters (Inches)	
	A	B
30	234.9 (9.25)	74.6 (2.94)
60	304.8 (12.00)	93.7 (3.69)
100	355.6 (14.00)	104.9 (4.13)

AEP Plug



Amp	Dimensions in Millimeters (Inches)		
	A	B	C
30	152.4 (6.00)	81.0 (3.19)	54.8 (2.16)
60	152.4 (6.00)	81.0 (3.19)	54.8 (2.16)
100	227.0 (8.94)	107.9 (4.25)	79.5 (3.13)

AJAC and AJA Mounting Boxes ①



Amp	Hub Size (Inches)	Dimensions in Millimeters (Inches)		
		A	B ①	C
60 and 100	1	28.7 (1.13)	14.2 (0.56)	203.2 (8.0)
	1-1 (4)	28.7 (1.13)	14.2 (0.56)	203.2 (8.0)
	1-1 (2)	38.1 (1.50)	14.2 (0.56)	203.2 (8.0)
	2	38.1 (1.50)	14.2 (0.56)	203.2 (8.0)

① AJA has two hubs. Close-up plug furnished in bottom recessed hub.

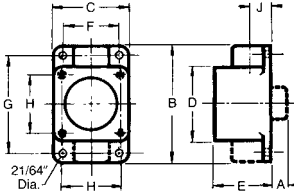
AE Series Mounting Box

For AE Series 30, 60, and 100 Amp Receptacles

NEC:
Rated for Ordinary (Unclassified) Locations

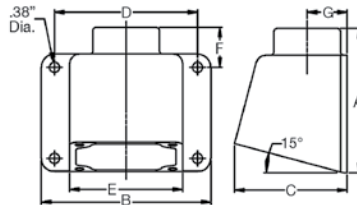
Dimensions in Millimeters (Inches)

AERA ①, AERC and AERH Mounting Boxes



Amp	Hub Size (Inches)	Dimensions in Millimeters (Inches)								
		A ①	B	C	D	E	F	G	H	J
30	1/2	17.5 (0.69)	134.8 (5.31)	85.8 (3.38)	85.8 (3.38)	63.5 (2.50)	66.8 (2.63)	115.8 (4.56)	69.0 (2.72)	23.8 (0.94)
30	3/4	19.0 (0.75)	134.8 (5.31)	85.8 (3.38)	85.8 (3.38)	63.5 (2.50)	66.8 (2.63)	115.8 (4.56)	69.0 (2.72)	23.8 (0.94)
30	1	20.5 (0.81)	134.8 (5.31)	85.8 (3.38)	85.8 (3.38)	63.5 (2.50)	66.8 (2.63)	115.8 (4.56)	69.0 (2.72)	23.8 (0.94)
60	1	20.5 (0.81)	165.1 (6.50)	107.9 (4.25)	107.9 (4.25)	79.5 (3.13)	88.9 (3.50)	149.3 (5.88)	88.9 (3.50)	35.0 (1.38)
60	1-1/4	23.8 (0.94)	165.1 (6.50)	107.9 (4.25)	107.9 (4.25)	79.5 (3.13)	88.9 (3.50)	149.3 (5.88)	88.9 (3.50)	35.0 (1.38)
60	1-1/2	25.4 (1.00)	165.1 (6.50)	107.9 (4.25)	107.9 (4.25)	79.5 (3.13)	88.9 (3.50)	149.3 (5.88)	88.9 (3.50)	35.0 (1.38)

AEE Mounting Box



Amp	Hub Size (Inches)	Dimensions in Millimeters (Inches)						
		A	B	C	D	E	F	G
30	1/2, 3/4, 1	104.6 (4.12)	127.0 (5.00)	84.5 (3.33)	107.9 (4.25)	85.8 (3.38)	29.9 (1.18)	27.9 (1.10)
60 and 100	1, 1-1/4, 1-1/2	137.4 (5.41)	162.0 (6.38)	107.4 (4.23)	136.6 (5.38)	107.9 (4.25)	38.1 (1.50)	38.1 (1.50)

① Dimension "A" for AERA only.